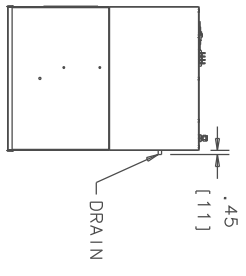
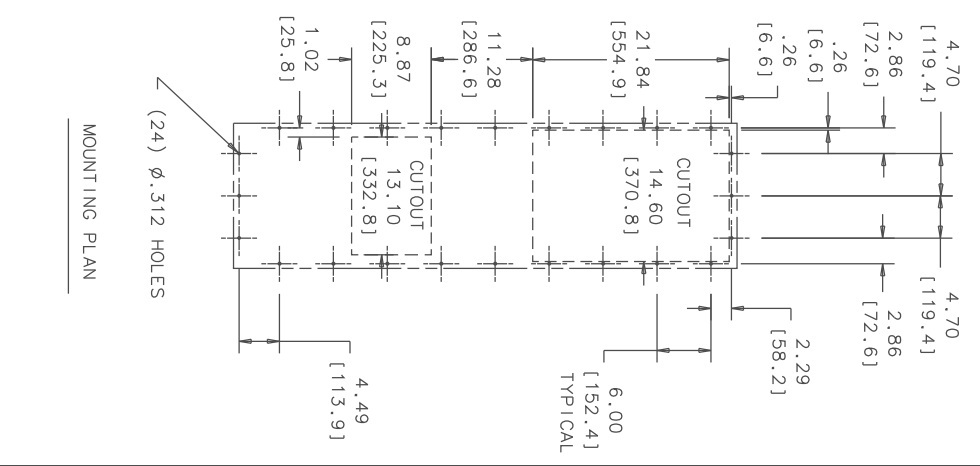
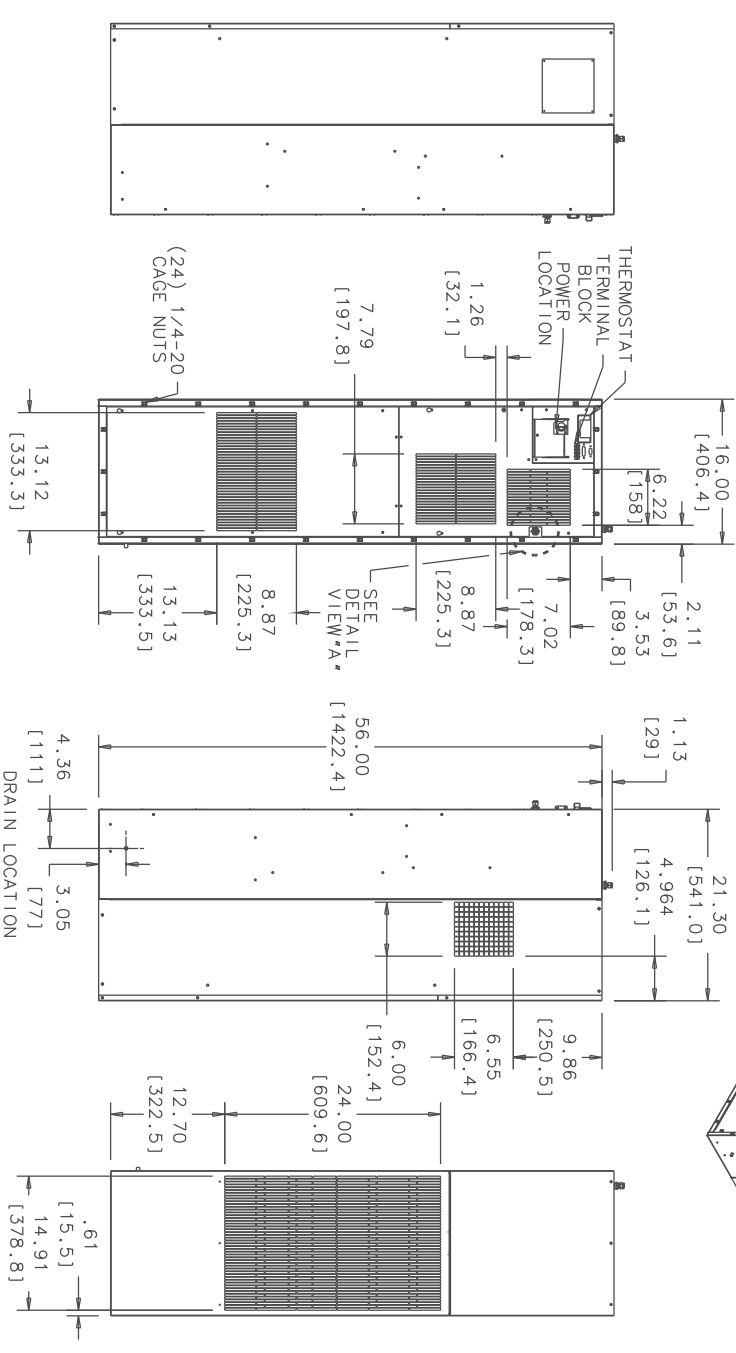
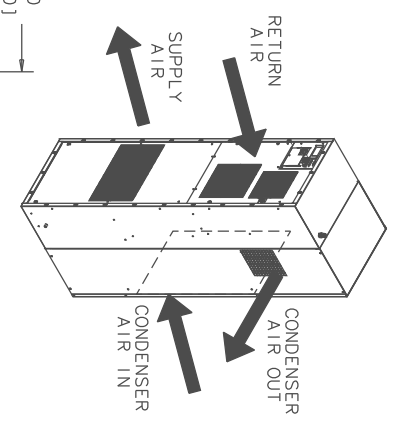
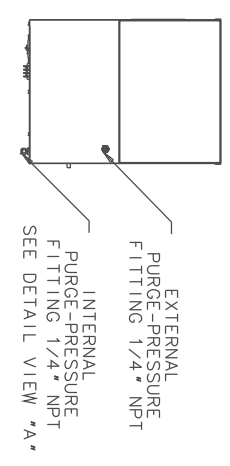
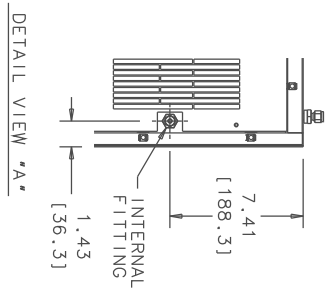


THIS DOCUMENT IS THE PROPERTY OF KOOLTRONIC, INC. AND CONTAINS PROPRIETARY AND CONFIDENTIAL INFORMATION WHICH MUST NOT BE DUPLICATED, USED OR DISCLOSED TO OTHERS, EXCEPT AS EXPRESSLY AUTHORIZED IN WRITING BY KOOLTRONIC, INC.



REVISIONS		DATE	APPROVED
SW	NOTICE	8/22/14	JS
ER	14/028	NEW DRAWING RELEASE.	

DIMENSIONS ARE IN INCHES, UNLESS OTHERWISE SPECIFIED. ALL DIMENSIONS DESIGNATED MM ARE IN MILLIMETERS.		DATE
TOL. ON DIMENSIONS	MM	8/20/14
TOLERANCES NON-COMMUTATIVE		
XXX	: .02	
XXX	: .010	
ANGULAR	: 1/2°	

DESIGNED BY	Steve Schmitt	DATE	8/25/14
DRWN BY	D. WALDRON	DATE	8/20/14
ENG. BY	B. MUZIKANT	DATE	8/20/14
WFC. ENG.			

UNIT	K3A6C12HL56LV	APPROVED BY	Joe M/Bruce K	DATE	8/27/14
MATERIAL	SEE BOM	CODE IDENT. NO.	06223	SIZE	C
		SCALE	.0375:1	QTY. REF.	
		IMP. NO.	GA202056A	REV.	
				SHEET	1 OF 1



GENERAL ARRANGEMENT
K3A6C12HL56LV

F

E

D

C

B

A

1

2

3

4

5

6

7

8

F

E

D

C

B

A