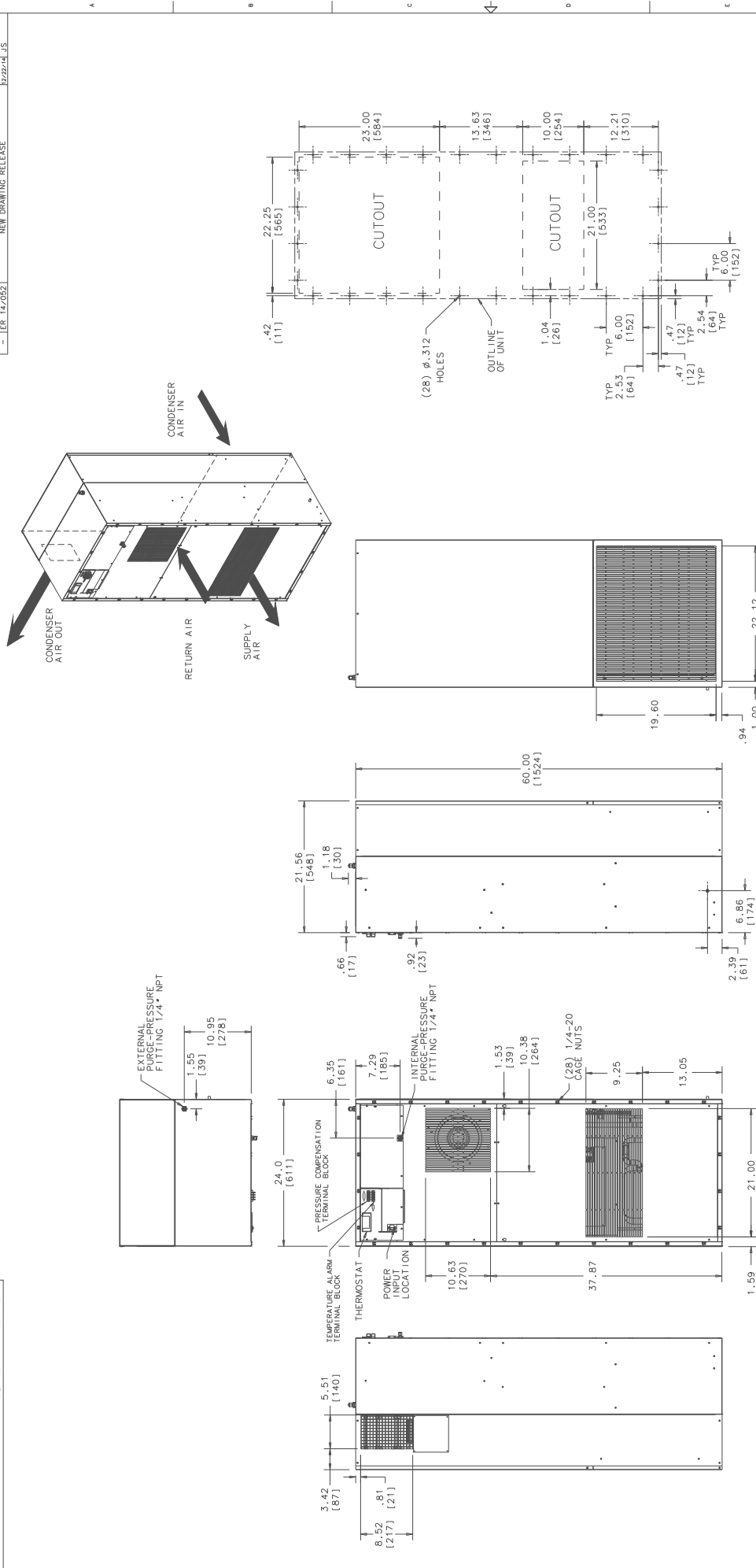


THIS DOCUMENT IS THE PROPERTY OF KOOLTRONIC, INC. AND CONTAINS PROPRIETARY AND CONFIDENTIAL INFORMATION WHICH MUST NOT BE REPRODUCED, COPIED OR DISCLOSED TO OTHERS, EXCEPT AS EXPRESSLY AUTHORIZED IN WRITING BY KOOLTRONIC, INC.

REV	NOTICE	DESCRIPTION	DATE	APPROVED
1	ER 14/052	NEW DRAWING RELEASE	12/22/14, JS	



DIMENSIONS DESIGNATED IN INCHES		DIMENSIONS DESIGNATED IN MILLIMETERS	
INCHES	DECIMALS	MILLIMETERS	WHOLE NUMBERS
1/16	0.0625	1.5	15
1/8	0.125	3.0	30
3/16	0.1875	4.5	45
1/4	0.25	6.0	60
5/16	0.3125	7.5	75
3/8	0.375	9.0	90
7/16	0.4375	10.5	105
1/2	0.5	12.0	120
9/16	0.5625	13.5	135
5/8	0.625	15.0	150
11/16	0.6875	16.5	165
3/4	0.75	18.0	180
13/16	0.8125	19.5	195
7/8	0.875	21.0	210
15/16	0.9375	22.5	225
1	1.0	24.0	240

KOOLTRONIC	
DESIGNED BY	JERRY STEDNICK 10/14/14
CHECKED BY	Steve Schmitter 12/29/14
DATE	12/23/14
BY	Boris Muzikant
FOR	MEG, INC.
TITLE	GENERAL ARRANGEMENT K3A6C24HL60LV
UNIT	K3A6C24HL60LV
SIZE	1/8" X 1/4" X 1/8"
DRG. NO.	GA202060A
REV.	1 OF 1