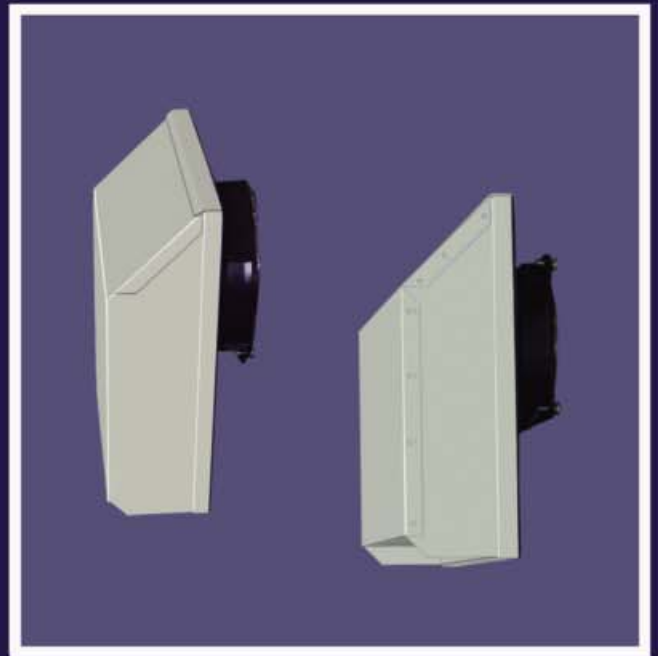




Advantage Series Filter Fans



Advantage Sentry Series Filter Fans

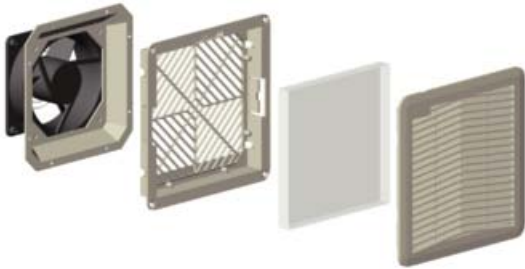


Advantage Series Filter Fans

Overview

Designed for cooling the interior of cabinets containing electronics, the *Advantage Series Filter Fans* are a cost-effective solution for a variety of applications. Filter Fans can be used where filtered ambient air is acceptable, and where the equipment can tolerate temperatures slightly above ambient.

Advantage Filter Fans feature durable, attractive plastic grilles which contribute to a clean, linear design. They also boast an extremely flat profile, which blends well with modern enclosures and keeps the unit from protruding from the cabinet wall.



***Advantage Filter Fans* offer convenience, versatility and reliability:**

VARIETY OF SIZES AND AIRFLOWS: Five sizes are offered from 4.13 inches [104.9mm] (sq.), to 12.80 inches [325.1mm] (sq.). Airflows range from 32 to 988 CFM.

FAST MOUNTING: With elastic hooks and an integrated seal, the *Advantage Series Filter Fans* can be mounted easily into the opening provided on the panel. There is no need for extra screws or preparation.

WIDE RANGE OF MOUNTING DIMENSIONS: The precise planning of the elastic hooks and gaskets allow the fans to be mounted in openings with a tolerance range of .06 inches [1.5mm] and a plate thickness of between .06 inches [1.5mm] and .09 inches [2.2mm].

Options

- Filter fans can be supplied with reversed airflow direction (from inside the cabinet to outside). In this case the letter "R" must be added to the order code.
- Depending on the request and quantity, the plastic parts can be supplied in different colors.
- The *Advantage Series Filter Fans* are also available with shielding against electromagnetic interference (EMI).
- Filters and grille assemblies are also sold separately.

Component Characteristics

- Standard airflow direction is from the outside to the inside of the cabinet.
- The plastic enclosure consists of an ABS/PC alloy (Blend) and is self-extinguishing according to UL94V-0.
- The standard filter media consists of thermolinked, progressive structure synthetic fiber.
- Filters are stable up to 100°C and 100% relative humidity
- Filters guarantee a continuously high level of protection according to EU4, with a 94% separation according to DIN 24185 Standard.
- Dust capacity is particularly high (620 g/m²), which reduces maintenance.
- All materials used for the components can be recycled.

Sentry Series Filter Fans

- Indoor and Outdoor use.
- NEMA 3R Rating.
- Dissipate high heat loads economically.
- Available in a variety of sizes, voltages and protection levels.

Kooltronic has expanded its line of filter fans to include models offering the versatility and security of indoor or outdoor use. These new additions to the the *Advantage Filter Fans* have a NEMA 3R Rating and are a perfect choice for dissipating high heat loads economically. These filter fans are also available in a variety of sizes, voltages and protection levels. The *Advantage Sentry Series Indoor/Outdoor Filter Fans* offer the same convenience, versatility and reliability as the *Advantage Series Filter Fans* with the added protection of a NEMA 3R Rating, making these models an excellent choice for telecommunications and other outdoor applications.

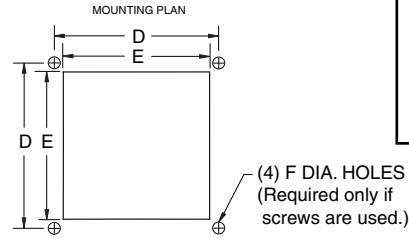
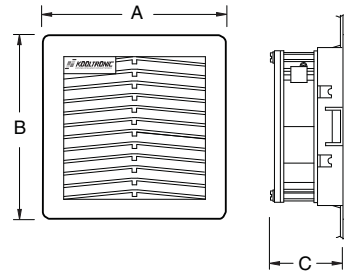


Advantage Series Filter Fans

Model*	Normally In Stock	Voltage V	Freq. Hz	Fan Airflow CFM	w/Grille Airflow CFM*	Input mA	Input W	Noise dB(A)	Operating Temp. °F	Agency Approvals
KFF08RB	Yes	115 AC	50/60	26/32	14/18	140/110	9/7	40/44	14° - 131°	1, 2, 4
K2FF08RB	Yes	230 AC	50/60	26/32	14/18	70/55	10/8	40/44	14° - 131°	1, 2, 4
K7FF08RDB		24 DC	---	39	16	120	2.9	34	14° - 131°	1, 2, 5
KFF12RBE	Yes	115 AC	50/60	94/105	34/36	210/180	20/18	43/48	14° - 131°	1, 2, 4
K2FF12RBE	Yes	230 AC	50/60	94/105	34/36	125/110	20/19	43/48	14° - 131°	1, 2, 3, 4
K7FF12RBE		24 AC	50/60	94/105	34/36	900/800	20/18	43/48	14° - 131°	1, 2
K7FF12RDB		24 DC	---	108	35	310	7.4	43	14° - 131°	1, 2, 5
K8FF12RDB		48 DC	---	108	35	160	7.7	43	14° - 131°	1, 2
KFF13PRBE		115 AC	50/60	94/105	65/71	210/180	20/18	43/48	14° - 131°	1, 2, 4
K2FF13PRBE		230 AC	50/60	94/105	65/71	125/110	20/19	43/48	14° - 131°	1, 2, 4
K7FF13PRDB		24 DC	---	108	71	310	7.4	43	14° - 131°	1, 2, 3, 5
KFF13RBE	Yes	115 AC	50/60	115/129	71/79	320/260	23/21	41/43	14° - 131°	1, 2, 4
K2FF13RBE	Yes	230 AC	50/60	115/129	71/79	160/130	23/21	41/43	14° - 131°	1, 2, 3, 4
KFF15PRBE		115 AC	50/60	94/105	68/74	210/180	20/18	43/48	14° - 131°	1, 2, 4
K2FF15PRBE		230 AC	50/60	94/105	68/74	125/110	20/19	43/48	14° - 131°	1, 2, 3, 4
K7FF15PRDB		24 DC	---	108	71	310	7.4	43	14° - 131°	1, 2, 4
K8FF15PRDB		48 DC	---	108	71	160	7.7	43	14° - 131°	1, 2
KFF15MRBE	Yes	115 AC	50/60	115/129	76/88	320/260	23/21	41/43	14° - 131°	1, 2, 3, 4
K2FF15MRBE	Yes	230 AC	50/60	115/129	76/88	160/130	23/21	41/43	14° - 131°	1, 2, 3, 4
KFF15RBE	Yes	115 AC	50/60	205/226	141/158	250/260	29/30	50/55	14° - 131°	1, 2, 3, 4
K2FF15RBE	Yes	230 AC	50/60	205/226	141/158	126/130	29/30	50/55	14° - 131°	1, 2, 3, 4
K7FF15RDB		24 DC	---	229	147	950	22.8	60	14° - 131°	1, 2, 4
K8FF15RDB		48 DC	---	229	147	370	17.8	60	14° - 131°	1, 2
KFF15GRBE	Yes	115 AC	50/60	465/535	212/235	820/1320	71/122	63/65	14° - 131°	1, 2, 4
K2FF15GRBE	Yes	230 AC	50/60	465/535	212/235	300/370	59/72	63/65	14° - 131°	1, 2, 4
K4FF15GRTBE		400 3Ø	50/60	476/538	212/235	140/130	69/69	65/72	14° - 122°	1, 2
KFF20RBE**	Yes	115 AC	50/60	465/535	306/341	820/1320	71/122	63/65	14° - 131°	1, 2, 5
K2FF20RBE**	Yes	230 AC	50/60	465/535	306/341	300/370	59/72	63/65	14° - 131°	1, 2, 3, 4
K4FF20RTE**		400 3Ø	50/60	476/538	306/341	140/130	69/69	65/72	14° - 122°	1, 2
KFF20GRB**	Yes	115 AC	50/60	897/988	382/429	790/1440	90/128	71/73	14° - 131°	1, 2, 5
K2FF20GRB**	Yes	230 AC	50/60	897/988	382/429	470/650	106/147	71/73	14° - 131°	1, 2, 5
K4FF20GRTB**		400 3Ø	50/60	897/988	382/429	220/220	105/105	71/73	14° - 122°	1, 2

* UL Rated if installed with provided filter.

** UL Recognized components only.



Agency Approvals (SEE CHART)

1. NEMA TYPE 12 MAINTAINED



Dimensions	A	B	C	D	E	F
KFF08	4.13 [105.0]	4.13 [105.0]	2.6 [66.0]	3.74 [95.0]	3.62 [92.0]	0.07 [1.8]
KFF12	5.91 [150.0]	5.91 [150.0]	2.80 [71.0]	5.16 [131.0]	4.93 [125.0]	0.18 [4.5]
KFF13	8.31 [211.0]	8.31 [211.0]	3.86 [98.0]	7.29 [185.0]	6.97 [177.0]	0.18 [4.5]
KFF15	9.84 [250.0]	9.84 [250.0]	4.84 [123.0]	9.06 [230.0]	8.79 [223.0]	0.18 [4.5]
KFF20	12.80 [325.0]	12.80 [325.0]	5.94 [151.0]	11.90 [302.0]	11.47 [291.0]	0.18 [4.5]

Dimensions, inches [metric], are for reference only and subject to change.

Advantage Sentry Series Filter Fans

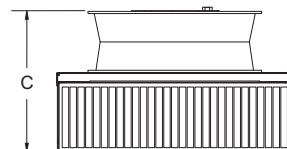
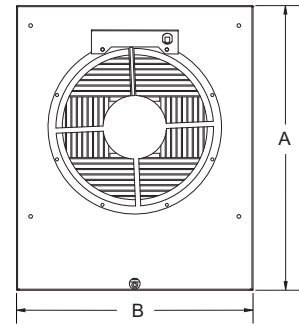
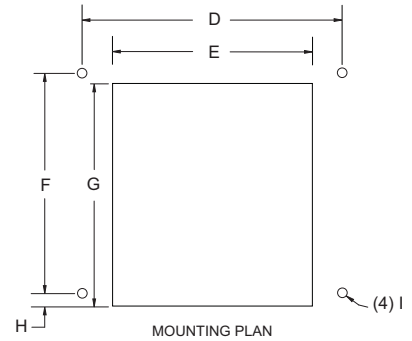
Model	Normally In Stock	Voltage V	Frequency Hz	Fan Airflow CFM	Unit Airflow CFM	Noise db(A)	Input mA	Input W	Operating Temp. °F
KNP40F	Yes	115 AC	50/60	88/102	60/69	45/47.5	22/22	18/17	14° - 158°
K2NP40F	Yes	230 AC	50/60	88/102	50/51	45/47.5	10/11	15/17	14° - 158°
K6NP40F		12 DC	---	125	52	45/47.5	0.4	4.8	14° - 140°
K7NP40F		24 DC	---	100	51	45/47.5	0.3	7.2	14° - 140°
K8NP40F		48 DC	---	108	57	45/47.5	<.1	---	14° - 158°
KNP60F	Yes	115 AC	50/60	183/212	116/134	57/61	27/32	31/37	-40° - 158°
K2NP60F	Yes	230 AC	50/60	183/212	111/133	57/61	12/15	28/34	-40° - 158°
K8NP60F		48 DC	---	230	132	57/61	0.4	19.2	14° - 158°
KNP100F	Yes	115 AC	50/60	338/405	141/172	55/58	35/38	36/38	-40° - 158°
K2NP100F	Yes	230 AC	50/60	338/405	151/188	55/58	50/45	64/62	-40° - 158°

** UL Rated if installed with provided filter.

Dimensions	A	B	C	D	E	F	G	H	I
KNP40F	10.90 [277.0]	6.50 [165.0]	4.81 [122.0]	6.50 [165.0]	4.88 [124.0]	7.00 [178.0]	6.00 [152.0]	0.25 [6.0]	0.25 [6.0]
KNP60F	12.40 [315.0]	9.53 [242.0]	5.35 [136.0]	8.00 [203.0]	7.75 [197.0]	7.00 [178.0]	7.36 [187.0]	0.25 [6.0]	0.25 [6.0]
KNP100F	16.40 [417.0]	13.62 [346.0]	8.12 [206.0]	12.00 [305.0]	10.25 [260.0]	11.00 [279.0]	10.88 [276.0]	0.25 [6.0]	0.25 [6.0]

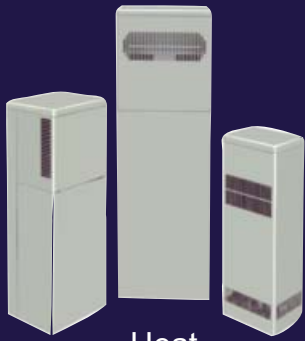
Dimensions, inches [metric], are for reference only and subject to change.

NEMA TYPE 3R MAINTAINED



Intertek is a nationally recognized testing laboratory (NRTL). They have tested these products and found them to comply to applicable UL Standards.

KOOLTRONIC CARRIES A FULL LINE OF AIR CONDITIONERS, HEAT EXCHANGERS, FANS, BLOWERS AND ENCLOSURE ACCESSORIES



Heat Exchangers



**NEMA 4 or 4X Air Conditioners
(480 Volt models available)**



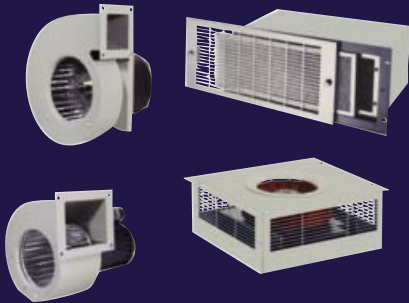
NEMA 12 Filter Fans



NEMA 4 or 4X Filter Fans



Fantrays



Basic Blowers and Packaged Blowers



Custom Design



Enclosure Accessories

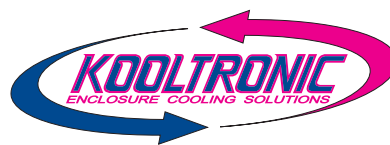
With over 60 years of service to its customers, Kooltronic is the leading manufacturer of air conditioners, heat exchangers, fans and blowers designed specifically to cool the interiors of enclosures containing heat sensitive components. We operate a complete manufacturing facility and sales office at our headquarters in Pennington, NJ.

Corporate Headquarters:

30 Pennington-Hopewell Road
Pennington, New Jersey 08534
Phone: (609) 466-3400



Scan with your smart phone to visit kooltronic.com



Cooling resources, tips & advice.



Email sales@kooltronic.com

kooltronic.com