



# KBC4E280/80B MOTORIZED IMPELLER

## TECHNICAL DATA

Model	CFM@ Cutoff		Volts	Hz	Amps	Watts	Capacitor		RPM	dBA	Min. Temp.	Max. Temp.
	0" S.P.	S.P.					μF	RPM				
KBC4E280/80B	944	1.00	115	60	0.94	101	10.0	1490	66	-40°F/-40°C	122°F/50°C	
KBC4E280/80B	820	0.72	115	50	0.97	92	10.0	1310	63	-40°F/-40°C	122°F/50°C	



## STANDARD FEATURES

- Low noise level
- 944 CFM capacity
- Available in 115 VAC, 50/60Hz
- Compact size
- Precision balanced
- External rotor design
- Precision ball-bearing motors
- Class F, thermally protected
- Galvanized Steel impeller
- UL Recognized
- Normally In-Stock

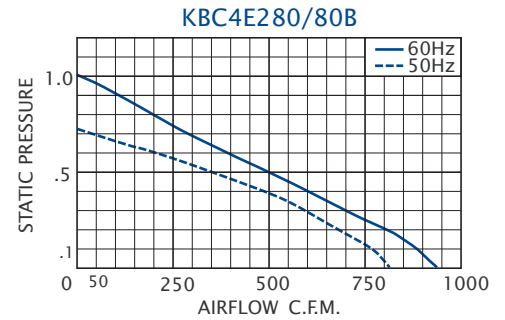
## ACCESSORIES\*

- Capacitor - P/N: 0452-62
- Inlet Ring - P/N: 1114-11
- Automatic Speed Control



**\*Note:** This unit requires a capacitor for operation. Capacitors are sold separately and shipped loose for field installation by customer. An Inlet Ring is recommended for optimum performance. These are sold separately, to be installed by the customer.

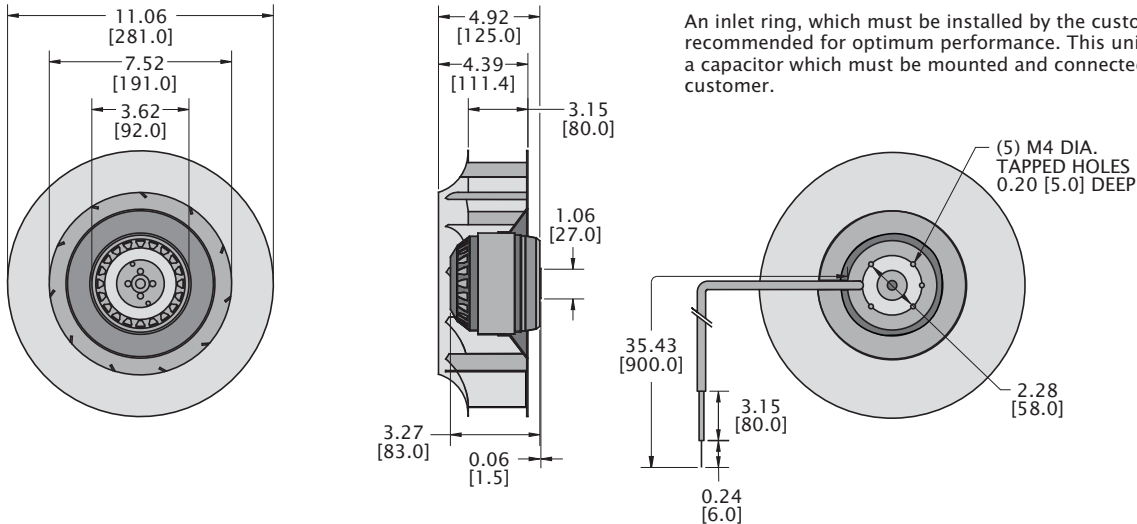
## PERFORMANCE



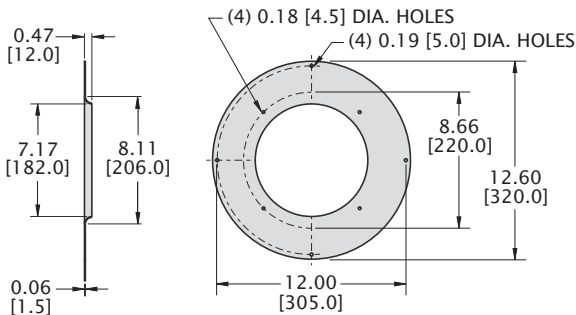
Airflow vs. static pressure curves are shown for 60 Hz and 50 Hz (broken line) inputs. Static pressure is in inches of water.

## DRAWINGS

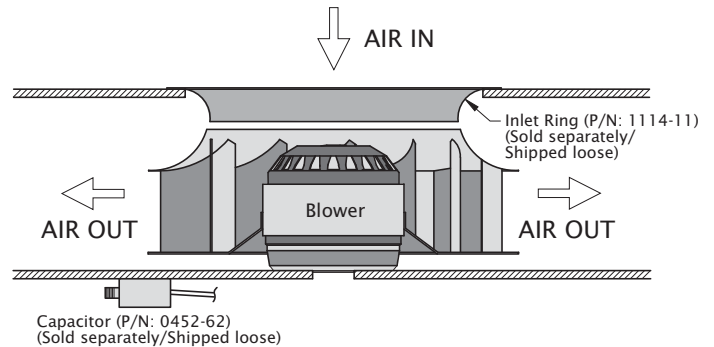
Dimensions, inches [mm], are for reference only and are subject to change.



### INLET RING P/N: 1114-11



### TYPICAL INSTALLATION



kbc4e280-80b.qxd 8/24/17