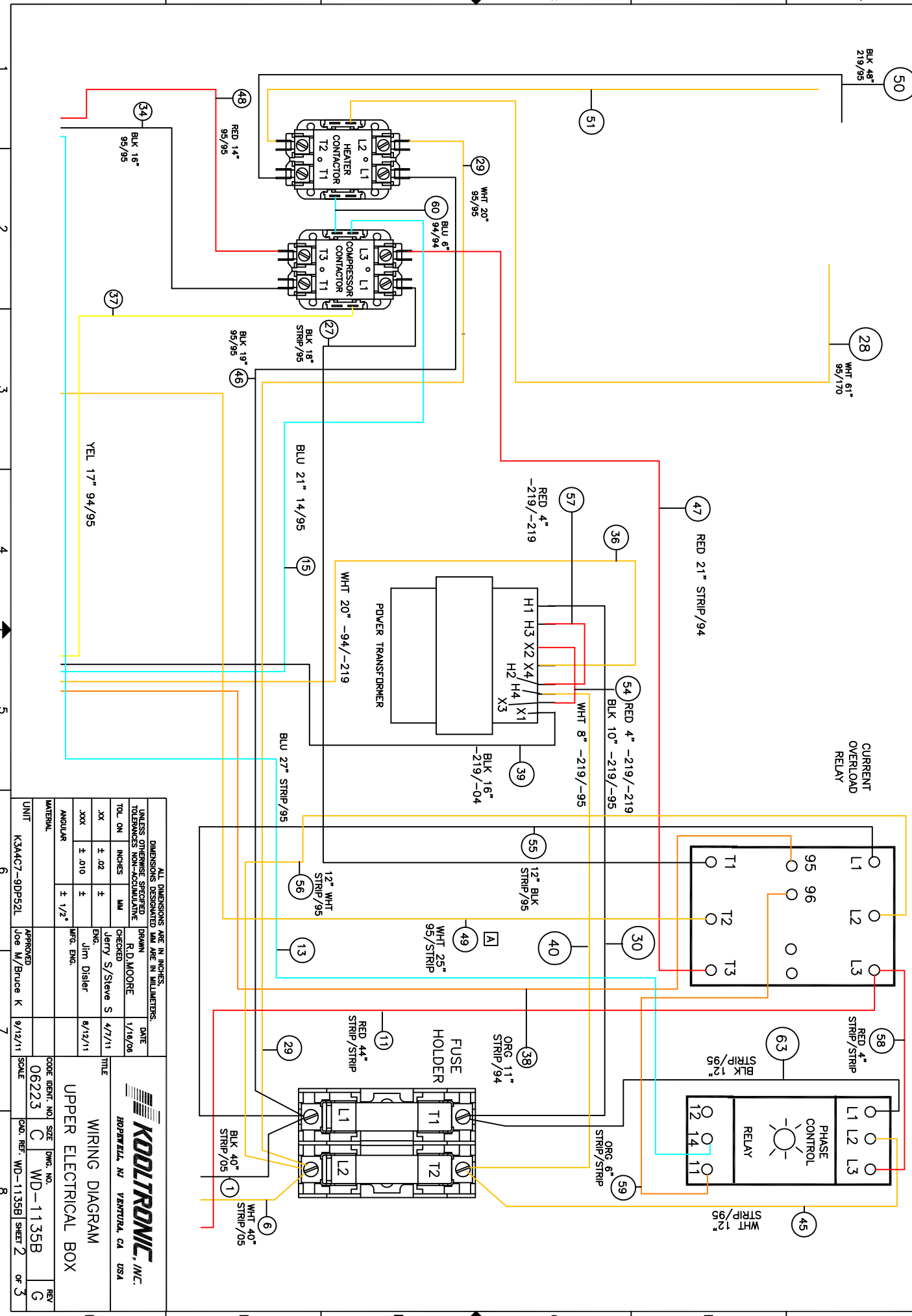


THIS DOCUMENT IS THE PROPERTY OF KOOLTRONIC, INC. AND CONTAINS PROPRIETARY AND CONFIDENTIAL INFORMATION WHICH MUST NOT BE DUPLICATED, USED OR DISCLOSED OTHER THAN AS EXPRESSLY AUTHORIZED BY KOOLTRONIC, INC.

REV	DATE	APPROVED	DESCRIPTION	REVISIONS
1	1/17/06	ROM	NEW DRAWING RELEASE	
2	10/24/07	ROM	CHANGED ITEM #60 6" WAS 4"	
3	2/13/08	SSS/MD		
4	4/8/13	new	EC 07/813 "R" ADDED (1) 25" STRIP/95 WHITE WIRE #39	
5	10/3/13	new	EC 08/109	
6	10/9/12	new	ER 05/158	
7	4/7/11	new	NOTICE	
8	10/9/12	new	ER 11/011	
9	4/8/13	new	Wires #44 & 45 were 7"	
10	10/3/13	new	WIRE #46 BLK 19" 95/95 WAS STRIP/95	
11	10/14/13	DW-	WIRE #59 ORG 6" WAS 5"	
12	10/14/13	DW-	WIRE #63 WAS #44.	



DIMENSIONS ARE IN INCHES. UNLESS OTHERWISE SPECIFIED TOLERANCES NON-ACCUMULATIVE		DATE	
TOL. ON INCHES	MM	CHECKED	DATE
.XX ± .02	±	Jerry S./Steve S	4/7/11
.XXX ± .010	±	ENG. Jim Disler	6/12/11
ANGULAR	± 1/2°	MFG. ENG.	

UNIT	APPROVED	DATE	SCALE
K3A4C7-9DP52L	Joe M/Bruce K	9/12/11	06223

CODE IDENT. NO.	SIZE	DWG. NO.	REV
C	C	WD-1135B	G

TITLE	DATE	APPROVED
UPPER ELECTRICAL BOX	1/17/06	ROM

KOOLTRONIC, INC.
 HOPWELL, NJ VENTURA, CA USA