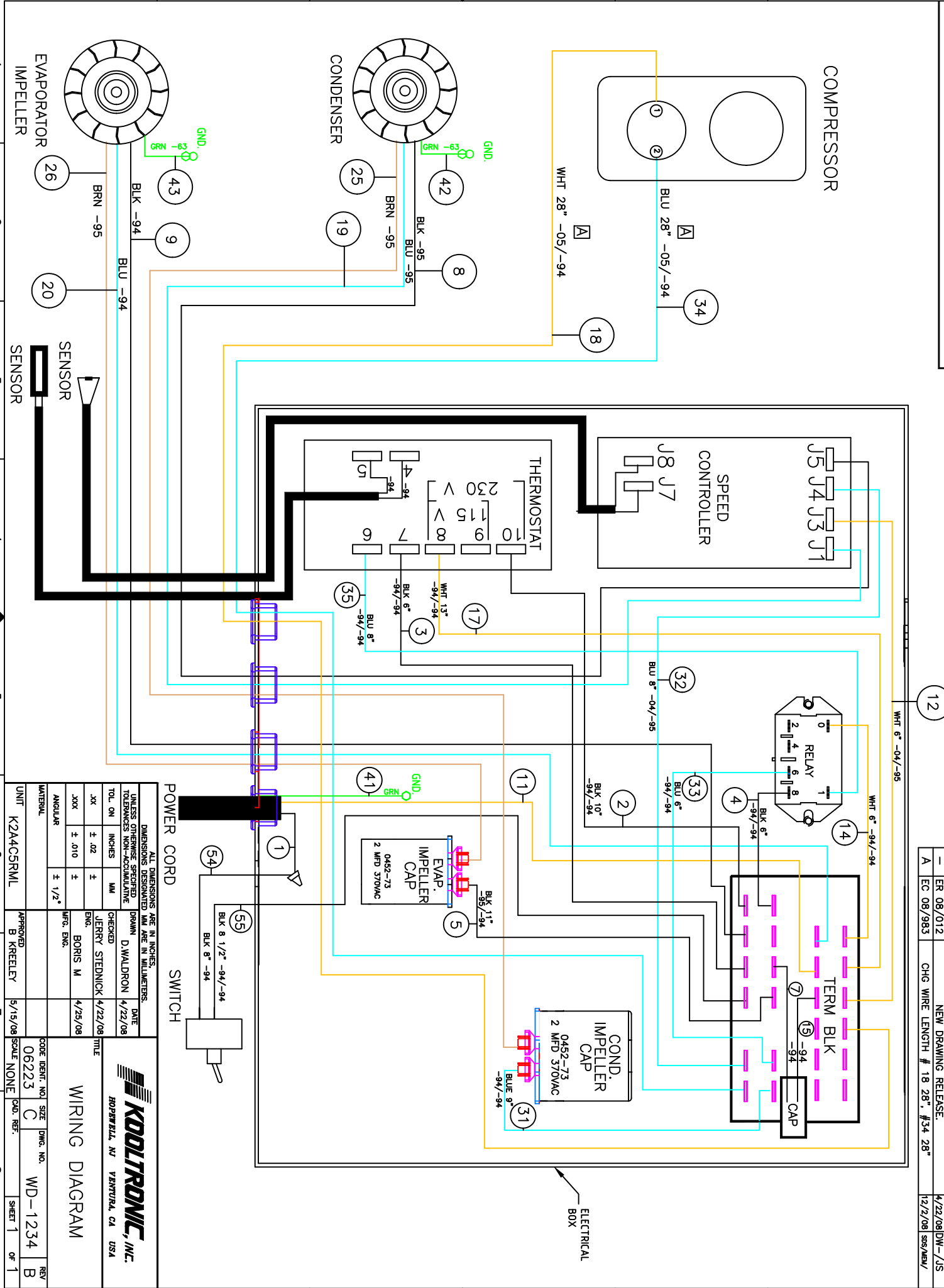


THIS DOCUMENT IS THE PROPERTY OF KOOLTRONIC, INC. AND CONTAINS PROPRIETARY AND CONFIDENTIAL INFORMATION WHICH MUST NOT BE DUPLICATED, USED OR DISCLOSED OTHER THAN AS EXPRESSLY AUTHORIZED BY KOOLTRONIC, INC.

B EC 08/10/19 CHANGED (5) WIRE TERMINATIONS TO -.95. 1/15/09/DW-

SYM	NOTICE	DESCRIPTION	DATE	APPROVED
-	ER 08/01/12	NEW DRAWING RELEASE.	4/22/08	DW-/JS
A	EC 08/98/3	CHG WIRE LENGTH # 18 28" #34 28"	12/2/08	SSS/AMW/



DIMENSIONS ARE IN INCHES. UNLESS OTHERWISE SPECIFIED. DIMENSIONS SPECIFIED MM ARE IN MILLIMETERS. TOLERANCES NON-RECIPROCAL.		DRAWN		DATE	
TOL. ON INCHES	MM	D. WALDRON	4/22/08		
XX ± .02	±	JERRY STEDNICK	4/22/08		
XXX ± .010	±	BORIS M.	4/25/08		
ANGULAR	± 1/2°	MFG. ENG.			

UNIT	MATERIAL	APPROVED	DATE	SCALE	TITLE
K2A4CSRML		B KREELEY	5/15/08	NONE	WIRING DIAGRAM

CODE IDENT. NO.	SIZE	DWG. NO.	REV
06223	C	WD-1234	B

KOOLTRONIC, INC.
 HOPEWELL, NJ VENTURA, CA USA