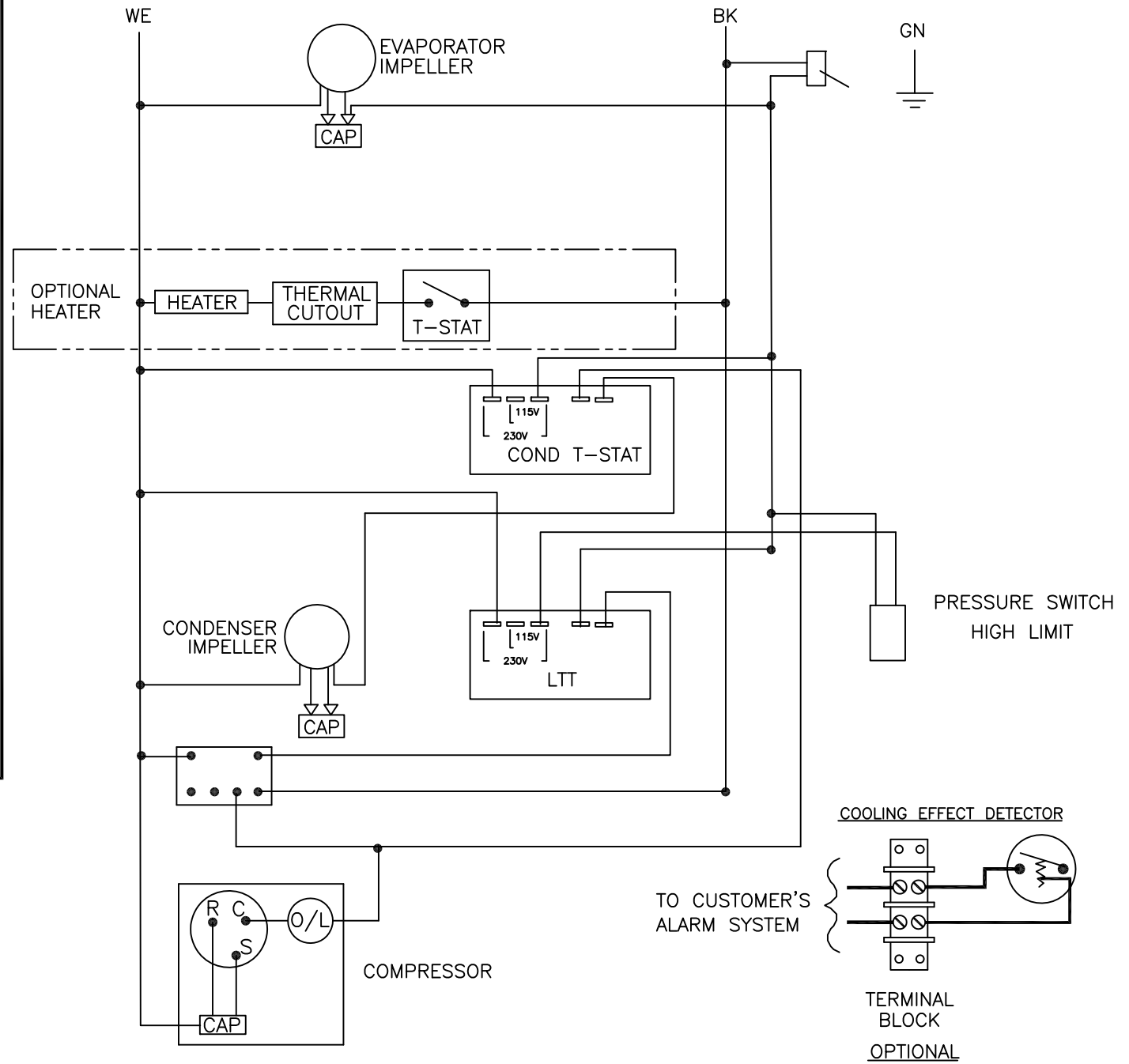


THIS DOCUMENT IS THE PROPERTY OF KOOLTRONIC, INC. AND CONTAINS PROPRIETARY AND CONFIDENTIAL INFORMATION WHICH MUST NOT BE DUPLICATED, USED OR DISCLOSED TO OTHERS, EXCEPT AS EXPRESSLY AUTHORIZED IN WRITING BY KOOLTRONIC, INC.

REVISIONS

SYM	NOTICE	DESCRIPTION	DATE	APPROVED
-	ER 09/001	NEW DRAWING RELEASE	1/5/09	JS
A	EC 09/691	ADDED PRESSURE SWITCH HIGH LIMIT.	12/28/09	DW-/JS
B	EC 14/170	REMOVED SURGE SUPPRESSOR	6/3/14	LM/



ALL DIMENSIONS ARE IN INCHES,  
DIMENSIONS DESIGNATED MM ARE IN MILLIMETERS.

UNLESS OTHERWISE SPECIFIED TOLERANCES NON-ACCUMULATIVE		
TOL. ON	INCHES	MM
.XX	± .02	±
.XXX	± .010	±
ANGULAR	± 1/2°	
MATERIAL	K_NA_C18DP53L	

DRAWN	JERRY STEDNICK	DATE	1/5/09
CHECKED	STEVE SCHMIERER	DATE	3/25/09
	BORIS M	DATE	1/28/10
	MFG. ENG.		
APPROVED	JOE MILKO	DATE	1/29/10



WIRING DIAGRAM  
COND. & COMPRESSOR T-STAT

CODE IDENT. NO.	SIZE	DWG. NO.	REV
06223	A	WD-1275	B
SCALE	CAD. REF.	SHEET	1 OF 1
N/A	WD-1275		