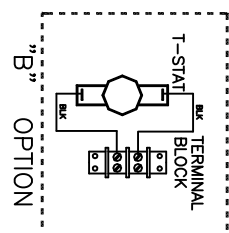
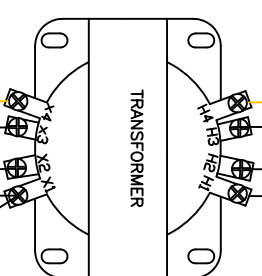
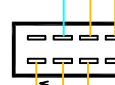
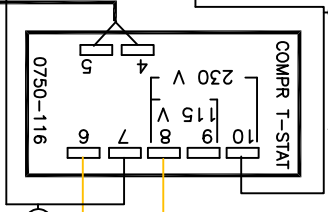
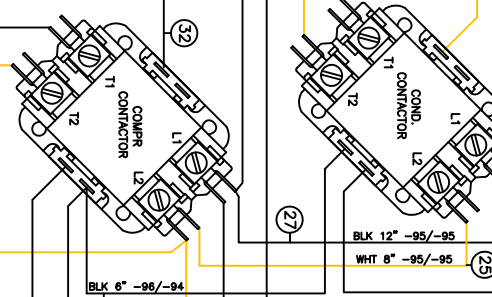
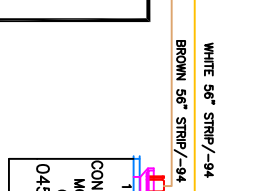
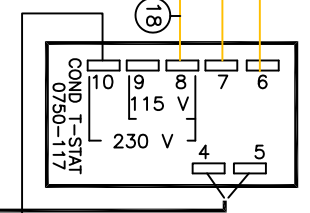
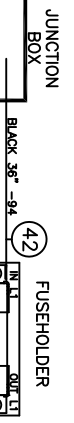
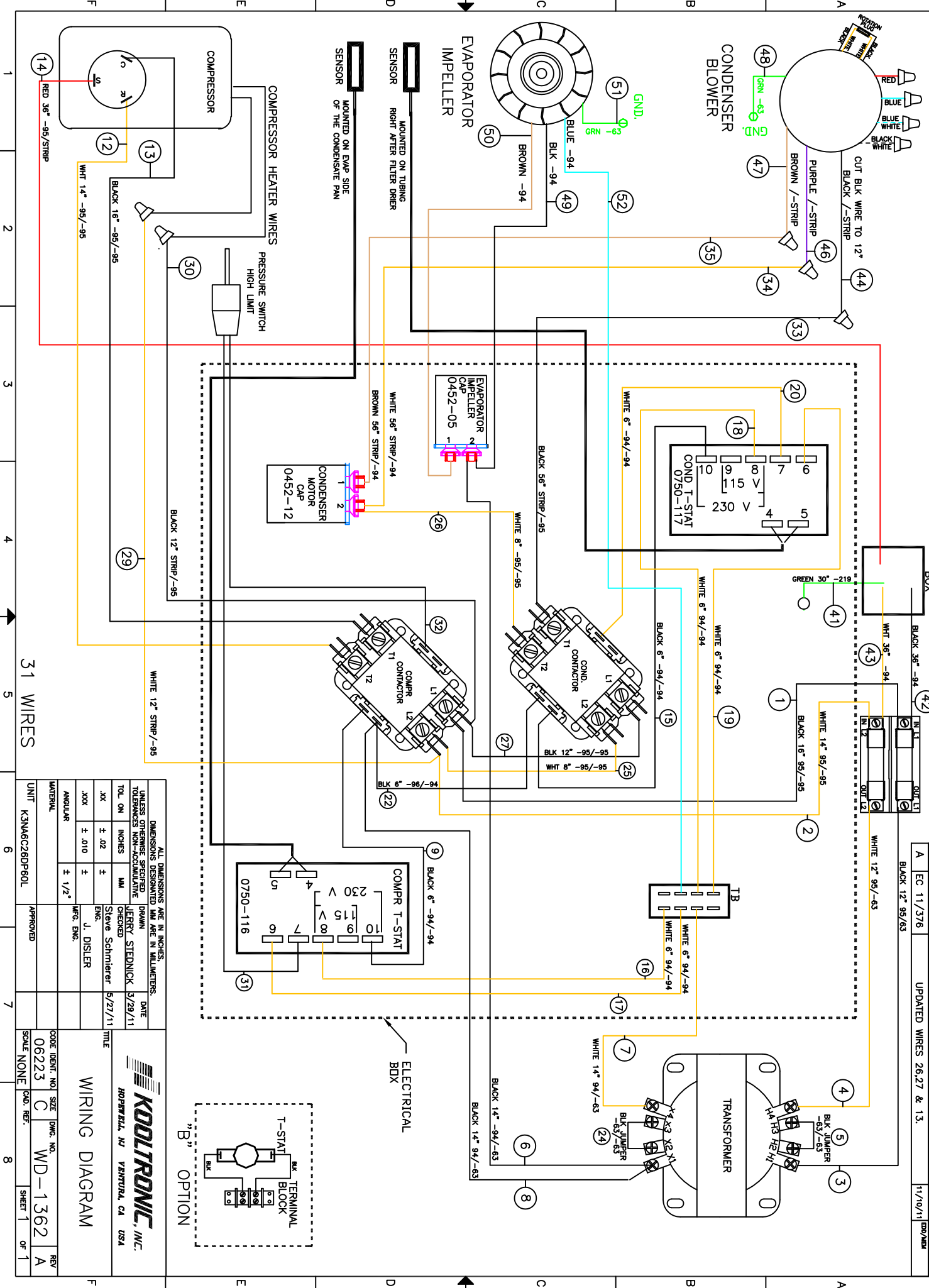


THIS DOCUMENT IS THE PROPERTY OF KOOLTRONIC, INC. AND CONTAINS PROPRIETARY AND CONFIDENTIAL INFORMATION WHICH MUST NOT BE DUPLICATED, USED OR DISCLOSED OTHER THAN AS EXPRESSLY AUTHORIZED BY KOOLTRONIC, INC.



REVISIONS		DATE	APPROVED
SWM	NOTICE	8/2/11	JS
-	ER 11/01/8	6/2/11	JS
A	EC 11/3/76	11/10/11	EM/MSD
UPDATED WIRES 26.27 & 13.			

ALL DIMENSIONS ARE IN INCHES. DIMENSIONS DESIGNATED MM ARE IN MILLIMETERS. UNLESS OTHERWISE SPECIFIED DRAWN BY JERRY STEDNICK 3/29/11 CHECKED BY Steve Schmitzer 5/27/11		DATE	
TOL. ON INCHES	MM	DATE	
.XX ± .02 ±		5/27/11	
.XXX ± .010 ±		ENG. J. DISLER	
ANGULAR	± 1/2°	MFG. ENG.	
MATERIAL		TITLE	
UNIT K3MA6C2BDP60L		WIRING DIAGRAM	
CODE IDENT. NO. 06223	SIZE C	DWG. NO. WD-1362	REV A
SCALE NONE	CAD. REF.		
		SHEET 1	OF 1

31 WIRES