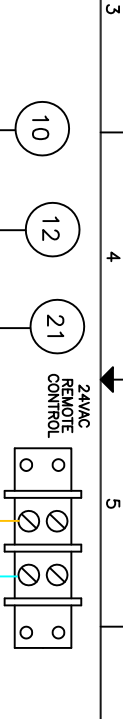
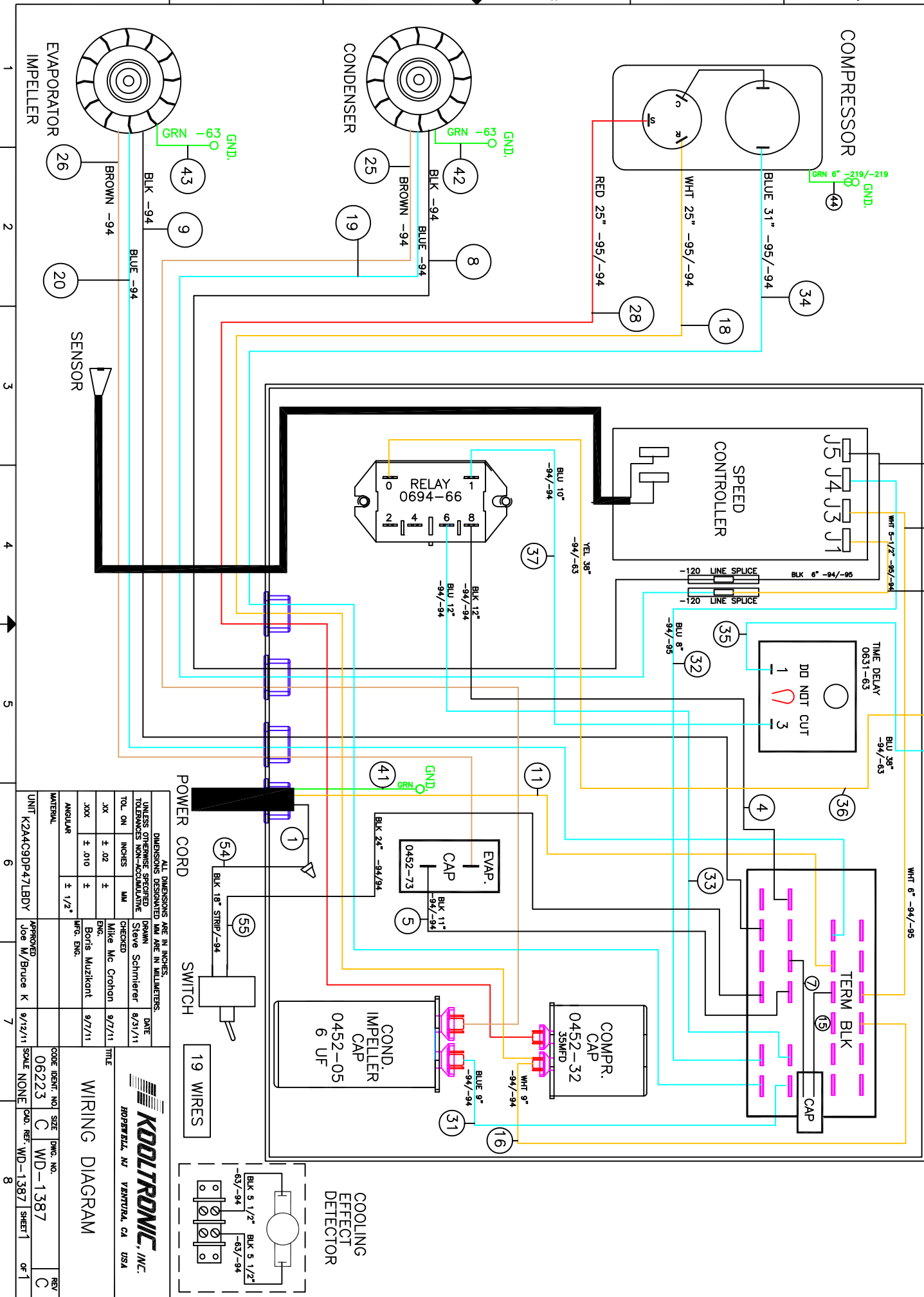


THIS DOCUMENT IS THE PROPERTY OF KOOLTRONIC, INC. AND CONTAINS PROPRIETARY AND CONFIDENTIAL INFORMATION WHICH MUST NOT BE DUPLICATED, USED OR DISCLOSED OTHER THAN AS EXPRESSLY AUTHORIZED BY KOOLTRONIC, INC.

B EC 13/100	ADDED GREEN GRD. WIRE TO COMPRESSOR	3/28/13	MM/JS
C EC 15/820	CHANGED WIRE TERMINALS ON WIRES #8 & #25. WAS -04	12/10/15	JS



REV	DESCRIPTION	DATE	APPROVED
1	NEW DRAWING RELEASE	8/31/11	SDS/
2	REVISED IMPELLER TERMINATION ASSY P/N'S.	3/27/12	DW-



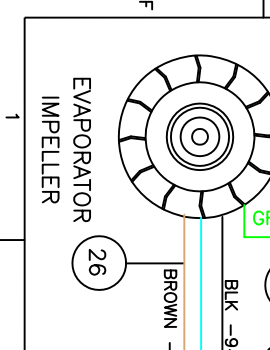
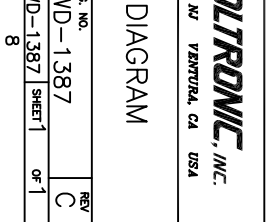
DIMENSIONS DESIGNATED MM ARE IN MILLIMETERS.		DATE	
TOL. ON INCHES	± .02	DESIGNED BY	9/27/11
TOLERANCES NON-DECIMALS	±	CHECKED BY	9/27/11
ANGULAR	± 1/2°	ENG.	9/27/11
MATERIAL		WFO. ENG.	

UNIT# K2A4C9DP47LBDY	APPROVED BY	DATE	SCALE
	Joe M/Bruce K	9/12/11	NONE

CODE IDENT. NO.	SIZE	DWG. NO.	REV
06223	C	WD-1387	C

KOOLTRONIC, INC.
 HOPWELL, NJ VERMONT, CA USA

WIRING DIAGRAM



EVAPORATOR IMPELLER

CONDENSER

COMPRESSOR

SPEED CONTROLLER

RELAY 0694-66

TIME DELAY 0631-63

EVAP. CAP 0452-73

COND. IMPELLER CAP 0452-05

COMPR. CAP 0452-32

COOLING EFFECT DETECTOR

POWER CORD

SWITCH

19 WIRES

SENSOR