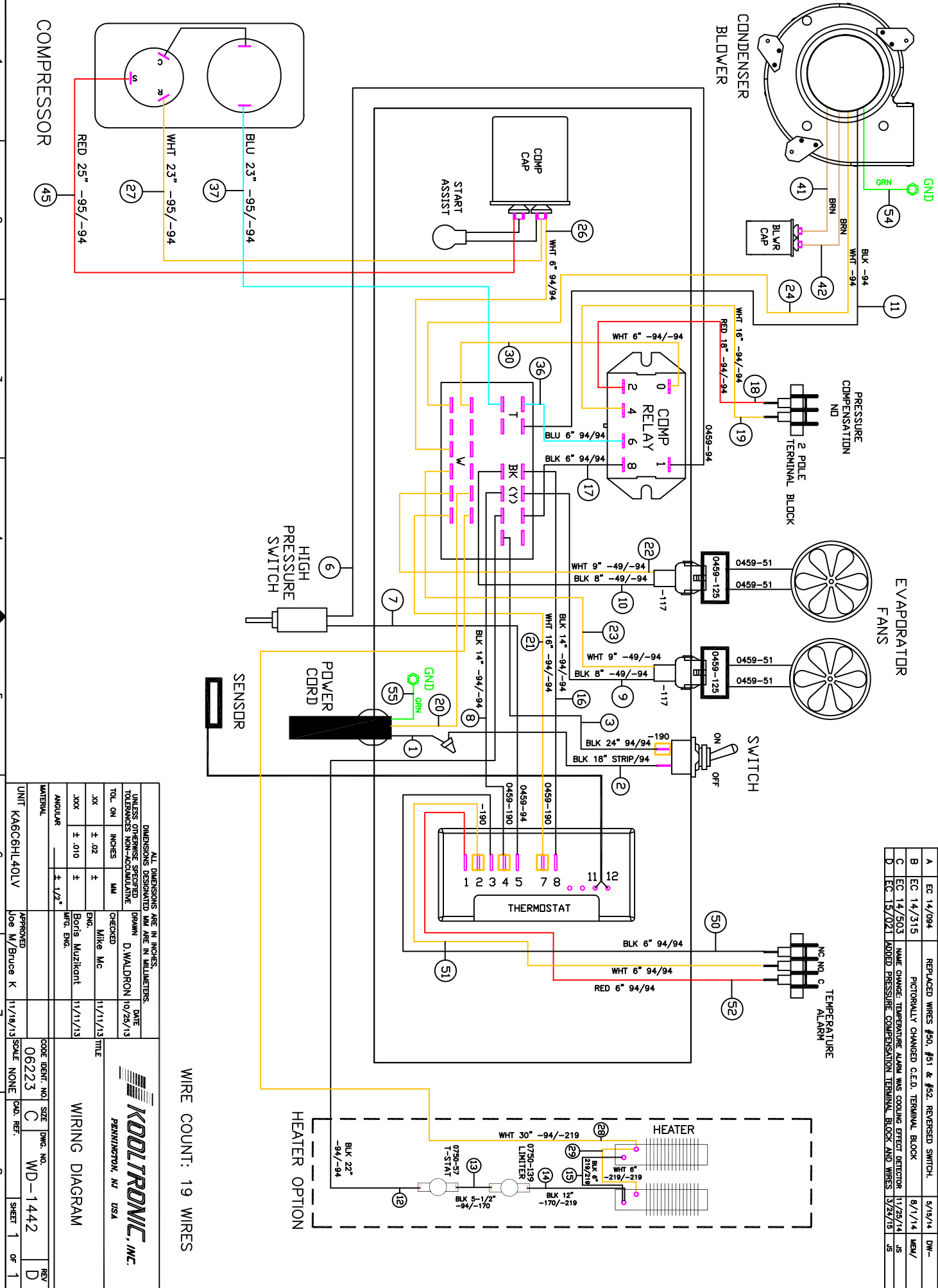


THIS DOCUMENT IS THE PROPERTY OF KOOLTRONIC, INC. AND CONTAINS PROPRIETARY AND CONFIDENTIAL INFORMATION WHICH MUST NOT BE DUPLICATED, USED OR DISCLOSED OTHER THAN AS EXPRESSLY AUTHORIZED BY KOOLTRONIC, INC.



WIRE COUNT: 19 WIRES

REV	DATE	APPROVED	DESCRIPTION
7	10/28/13	DW-	NEW DRAWING RELEASE
6	5/14/14	DW-	REPLACED WIRES #50, #51 & #52. REVERSED SWITCH.
5	8/1/14	NEM/	PICTORIALLY CHANGED C.E.D. TERMINAL BLOCK
4	11/28/14	JS	NAME CHANGE: TEMPERATURE ALARM WAS COOLING EFFECT DETECTOR
3	3/27/15	JS	ADDED PRESSURE COMPENSATION TERMINAL BLOCK AND WIRES
2			
1			

ALL DIMENSIONS ARE IN INCHES. DIMENSIONS DESIGNATED MM ARE IN MILLIMETERS. UNLESS OTHERWISE SPECIFIED TOLERANCES NON-ACCUMULATIVE		DRAWN D. WALDRON	DATE 10/28/13
TOL. ON INCHES	MM	CHECKED	
.XX ± .02	±	Mike Mc	11/11/13
.XXX ± .010	±	Boris Muzikent	11/11/13
ANGULAR	± 1/2°	WFO: ENG.	
MATERIAL UNIT KA6C6HL40LV		APPROVED Joe W/Bruce K	DATE 11/18/13
CODE IDENT. NO. SIZE DWG. NO. 06223 C WD-1442		SCALE NONE	REV D
WIRING DIAGRAM		SHEET 1 OF 1	

**KOOLTRONIC, INC.**  
PUNNINGTON, NJ USA