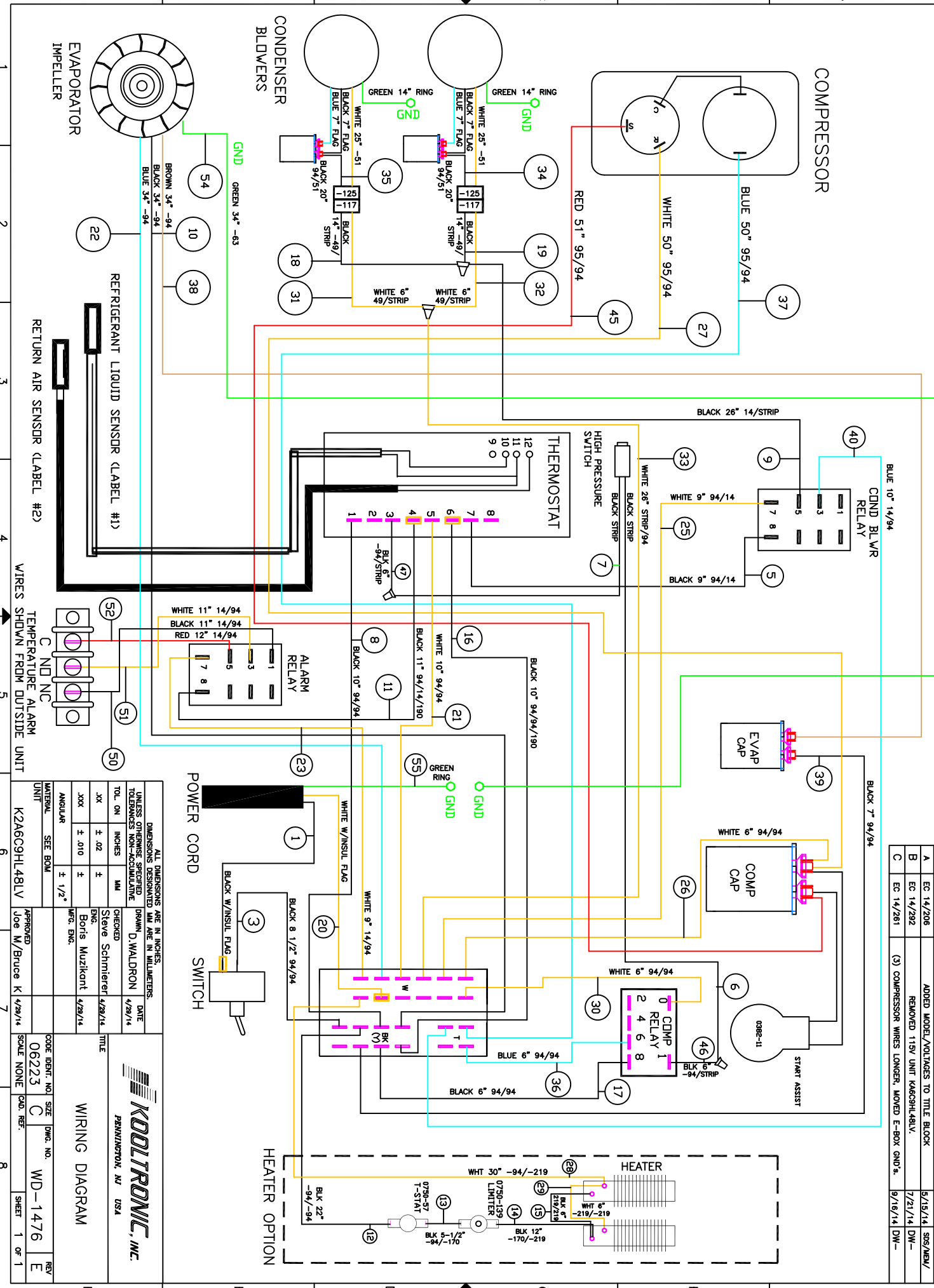


THIS DOCUMENT IS THE PROPERTY OF KOOLTRONIC, INC. AND CONTAINS PROPRIETARY AND CONFIDENTIAL INFORMATION WHICH MUST NOT BE DUPLICATED, USED OR DISCLOSED OTHER THAN AS EXPRESSLY AUTHORIZED BY KOOLTRONIC, INC.

D	EC 14/431	ADDED (2) PRESSURE SWITCH EXTENSION WIRES #46 & #47	10/22/14	US
E	EC 14/203	NAME CHANGE: TEMPERATURE ALARM WAS COOLING EFFECT DETECTOR	10/22/14	US

REV	DATE	APPROVED	DESCRIPTION
SWM	NOTICE		
ER 12/089	4/29/14	DW	NEW DRAWING RELEASE
EC 14/206	5/15/14	SRS/BEU	ADDED MODEL/VOLTAGES TO TITLE BLOCK
EC 14/292	7/21/14	DW	REMOVED 115V UNIT K2A6C9HL4BLV
EC 14/281	9/16/14	DW	(3) COMPRESSOR WIRES LONGER, MOVED E-BOX GND's



1 2 3 4 5 6 7 8

F E D C B A

**KOOLTRONIC, INC.**  
PENNINGTON, NJ USA

**WIRING DIAGRAM**

MATERIAL	SEE BOM	UNIT	
APPROVED	Joe M/Bruce K 4/29/14	SCALE	NONE
CODE IDENT. NO.	06223	SIZE	C
DWG. NO.	WD-1476	REV	E
SHEET	1	OF	1