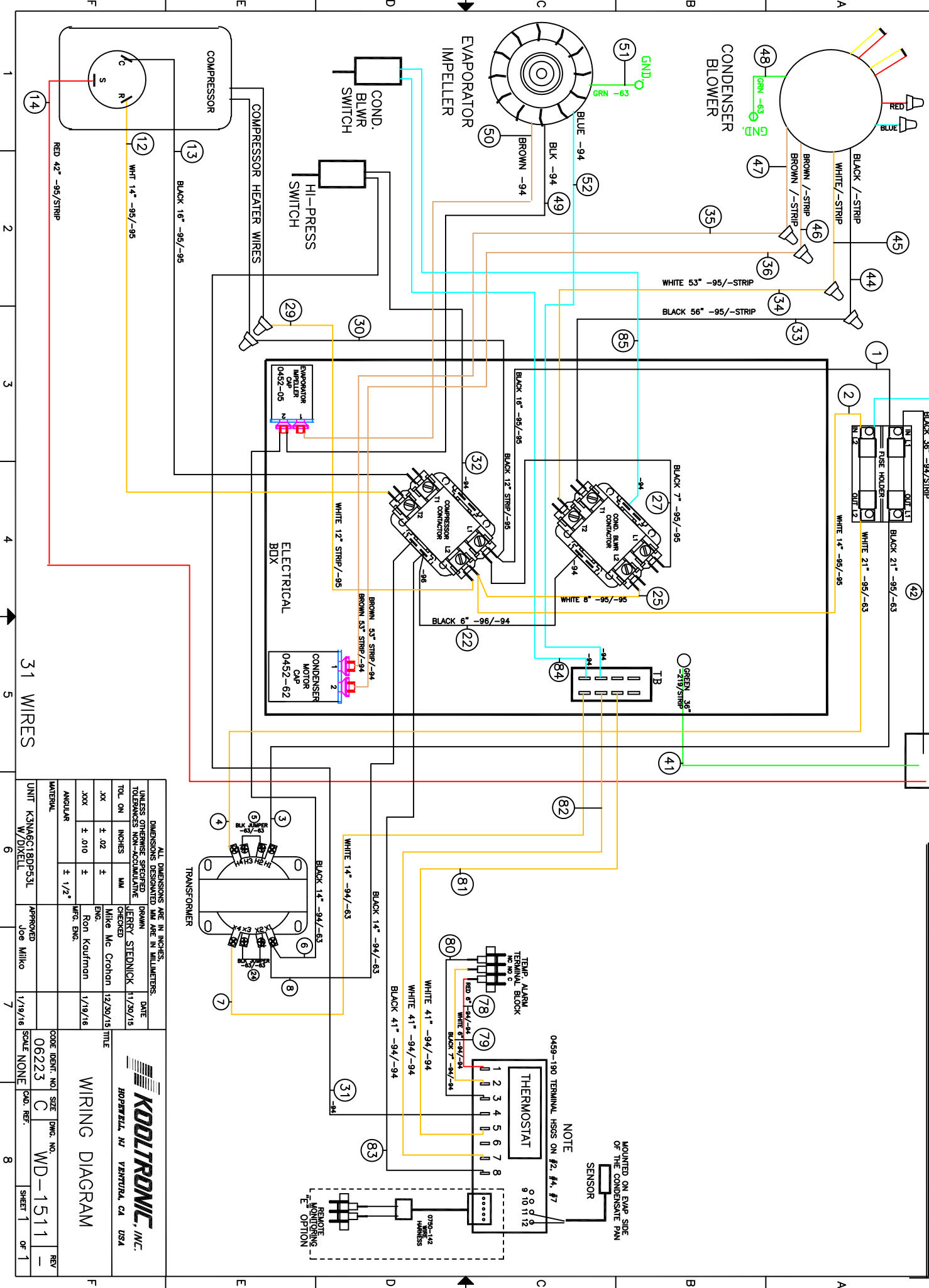


THIS DOCUMENT IS THE PROPERTY OF KOOLTRONIC, INC. AND CONTAINS PROPRIETARY AND CONFIDENTIAL INFORMATION WHICH MUST NOT BE DUPLICATED, USED OR DISCLOSED OTHER THAN AS EXPRESSLY AUTHORIZED BY KOOLTRONIC, INC.



REV	NOTICE	DESCRIPTION	DATE	APPROVED
1	EC 15/019	NEW DRAWING RELEASE	11/20/18	JS

REV	NOTICE	DESCRIPTION	DATE	APPROVED
1	EC 15/019	NEW DRAWING RELEASE	11/20/18	JS

31 WIRES

<p>ALL DIMENSIONS ARE IN INCHES. DIMENSIONS DESIGNATED MM ARE IN MILLIMETERS. UNLESS OTHERWISE SPECIFIED DRAWN TOLERANCES NON-ACCUMULATIVE</p>		<p>DATE 11/20/15</p>
<p>XX ± .02 ±</p>	<p>ENG. Mike Mc Crohon</p>	<p>DATE 12/29/15</p>
<p>XXX ± .010 ±</p>	<p>CHECKED Ron Koutfran</p>	<p>DATE 1/19/16</p>
<p>ANGULAR ± 1/2°</p>	<p>MFG. ENG.</p>	
<p>MATERIAL</p>		
<p>UNIT K3NA6C1BDP53L W/DIXELL</p>	<p>APPROVED Joe Mikko</p>	<p>DATE 1/19/16</p>
<p>SCALE NONE</p>	<p>CODE IDENT. NO. 06223</p>	<p>SIZE C</p>
<p>SHEET 1 OF 1</p>	<p>CD. REF. WD-1511</p>	<p>DWG. NO. WD-1511</p>
		<p>REV -</p>

KOOLTRONIC, INC.
 8029WELLS, NJ VENTURA, CA USA

WIRING DIAGRAM

NOTE: MOUNTED ON EMP. SIDE OF THE CONDENSATE PAN SENSOR

NOTE: 0459-190 TERMINAL HSSG ON #2, #4, #7

0779-142 WAX WAXES

REMOTE MOUNTING OPTION