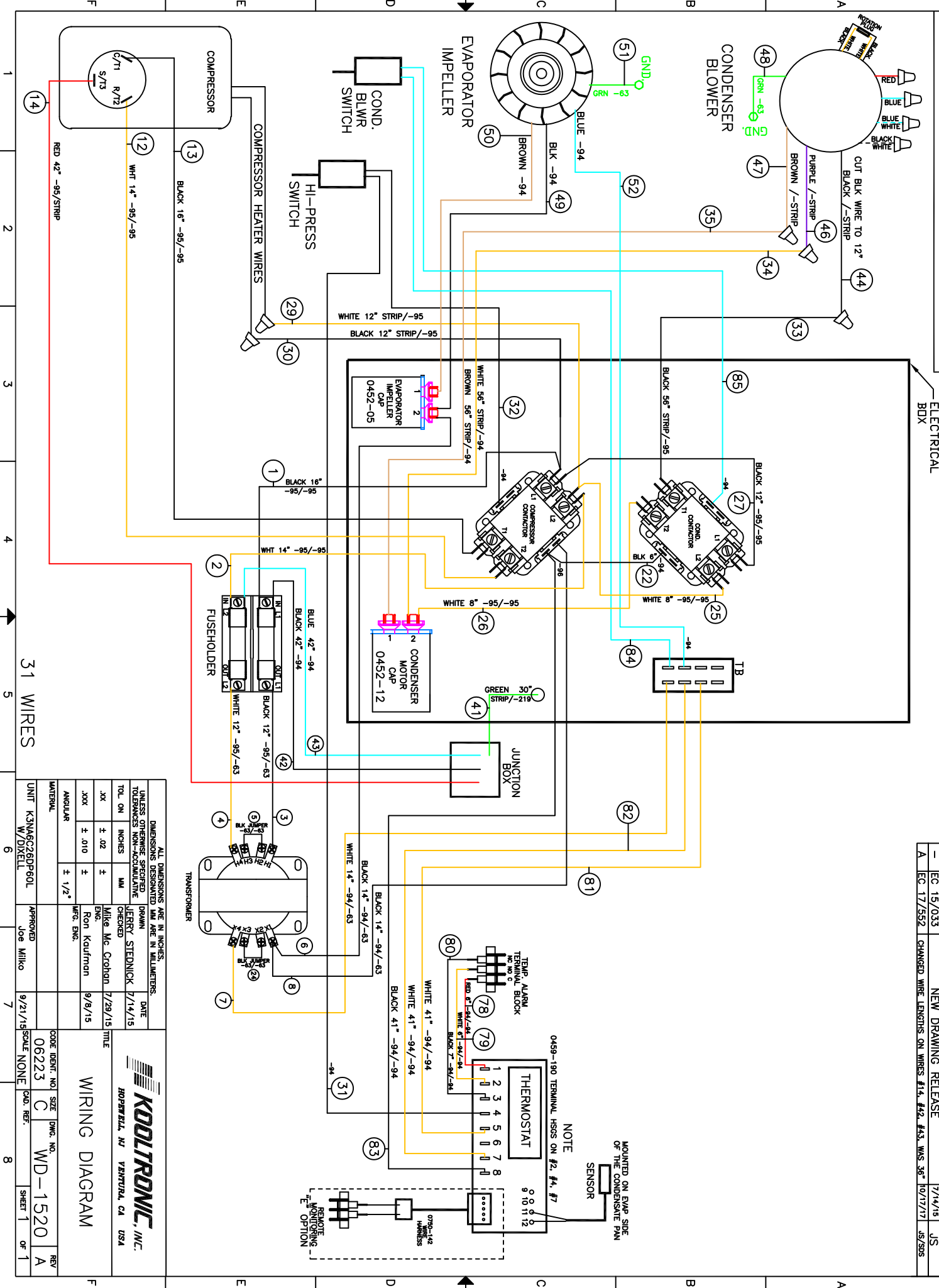


THIS DOCUMENT IS THE PROPERTY OF KOOLTRONIC, INC. AND CONTAINS PROPRIETARY AND CONFIDENTIAL INFORMATION WHICH MUST NOT BE DUPLICATED, USED OR DISCLOSED OTHER THAN AS EXPRESSLY AUTHORIZED BY KOOLTRONIC, INC.



REVISIONS		DATE	APPROVED
SWM	NOTICE		
-	EC 15/033	7/14/15	JS
A	EC 17/552	10/17/17	JS/SBS

SYM	DESCRIPTION
-	NEW DRAWING RELEASE
A	CHANGED WIRE LENGTHS ON WIRES #14, #42, #43, WWS 36"

<p>ALL DIMENSIONS ARE IN INCHES, DIMENSIONS DESIGNATED MM ARE IN MILLIMETERS. UNLESS OTHERWISE SPECIFIED DRAWN TOLERANCES NON-ACCUMULATIVE</p>	
DATE	7/14/15
CHECKED	JERRY STEDNICK
ENG.	Mike Mc Crahan
APP'D	Ron Kautzman
DATE	9/8/15
WFO. ENG.	
UNIT	K3NA6G26DP60L
W/DIXELL	
APPROVED	Joe Milko
DATE	9/21/15
SCALE	NONE
SHEET	1
OF	1

31 WIRES

WIRING DIAGRAM

KOOLTRONIC, INC.
ROPERVILLE, NJ VENTURA, CA USA

CODE IDENT. NO. 06223
SIZE C
DWG. NO. WD-1520
CAD. REF. A