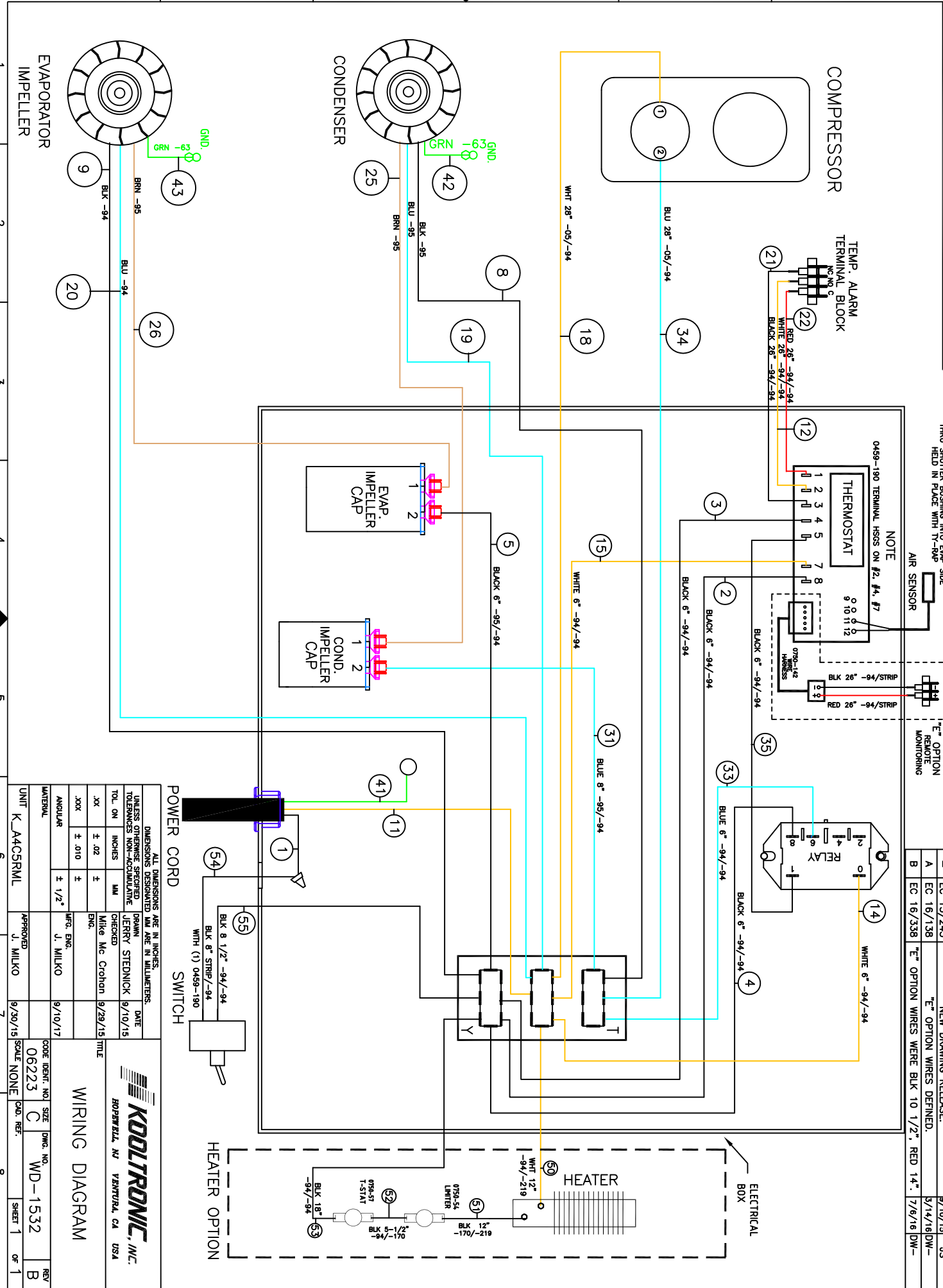


THIS DOCUMENT IS THE PROPERTY OF KOOLTRONIC, INC. AND CONTAINS PROPRIETARY AND CONFIDENTIAL INFORMATION WHICH MUST NOT BE DUPLICATED, USED OR DISCLOSED OTHER THAN AS EXPRESSLY AUTHORIZED BY KOOLTRONIC, INC.



THRU SHUTTER BUSHING INTO EVAP SIDE  
HELD IN PLACE WITH T-94P  
AIR SENSOR

NOTE

0459-190 TERMINAL HSSS ON #2, #4, #7

THERMOSTAT

E<sup>o</sup> OPTION  
REMOTE  
MONITORING

RELAY

REV	DATE	APPROVED	DESCRIPTION	REVISIONS
-	9/10/15	JS	NEW DRAWING RELEASE.	SYM NOTICE
A	9/14/16	DW	E <sup>o</sup> OPTION WIRES DEFINED.	EC 15/245
B	7/6/16	DW	E <sup>o</sup> OPTION WIRES WERE BLK 10 1/2", RED 14".	EC 16/138 EC 16/338

POWER CORD

ALL DIMENSIONS ARE IN INCHES.  
DIMENSIONS DESIGNATED MM ARE IN MILLIMETERS.  
UNLESS OTHERWISE SPECIFIED  
TOLERANCES NON-FUNCTIONAL

TOL.	ON	INCHES	MM	CHECKED	DATE
.XX	± .02	±	MM	JERRY STEDNICK	9/10/15
.XXX	± .010	±	MM	MIKE Mc CROHAN	9/29/15
ANGULAR	± 1/2°	±	MM	MRG. ENG.	

**KOOLTRONIC, INC.**  
ROSEMONT, NJ VENTNOR, CA USA

WIRING DIAGRAM

UNIT	CODE	DEPT.	NO.	SIZE	DRWG.	NO.	REV
K_A4C5RML	06223	C	WD-1532	B			
APPROVED	J. MILKO	9/30/15	SCALE	NONE	SHEET	1	OF 1