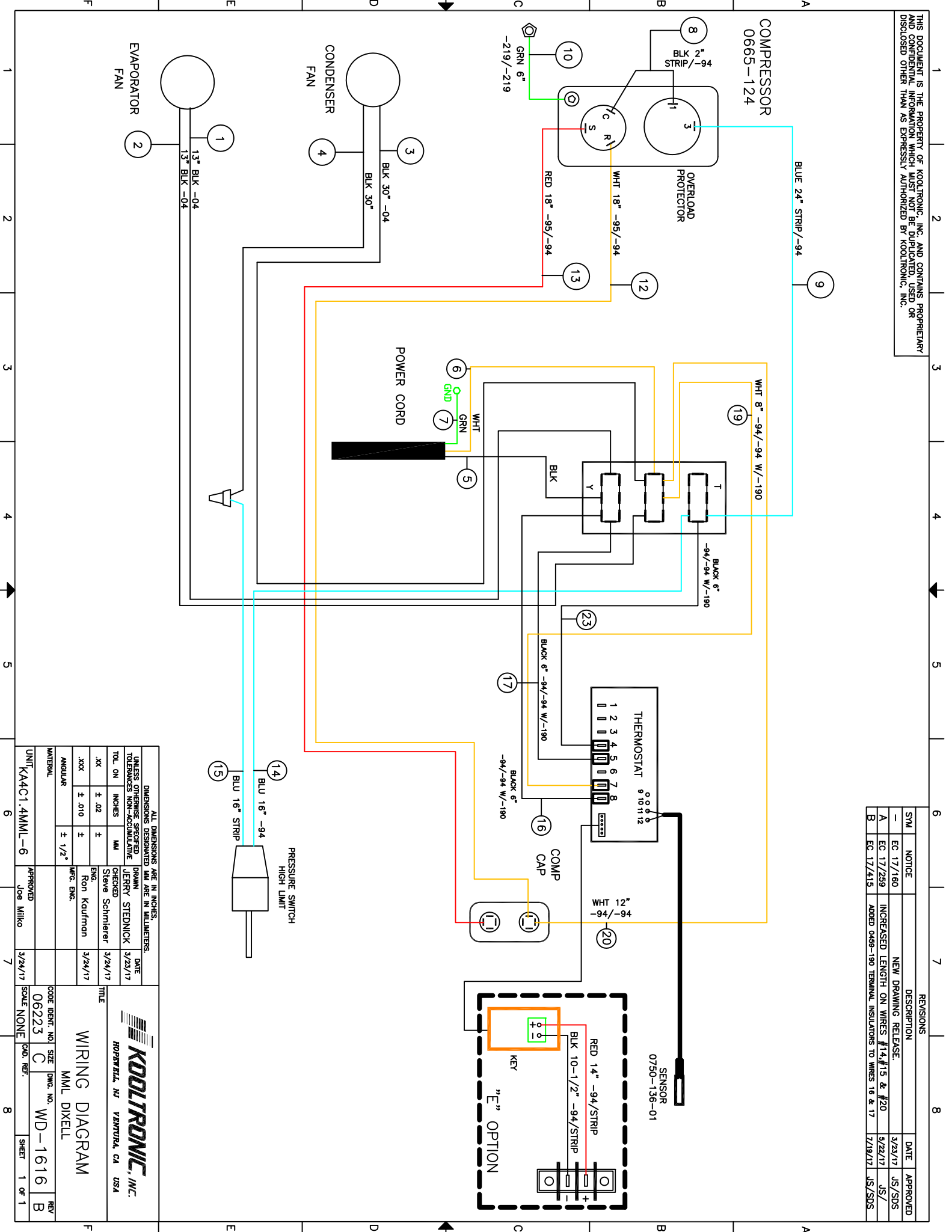


THIS DOCUMENT IS THE PROPERTY OF KOOLTRONIC, INC. AND CONTAINS PROPRIETARY AND CONFIDENTIAL INFORMATION WHICH MUST NOT BE DUPLICATED, USED OR DISCLOSED OTHER THAN AS EXPRESSLY AUTHORIZED BY KOOLTRONIC, INC.



| REVISIONS | | DESCRIPTION | DATE | APPROVED |
|-----------|-----------|---|----------|----------|
| SWM | NOTICE | NEW DRAWING RELEASE. | 3/23/17 | JS/SDS |
| A | EC 17/259 | INCREASED LENGTH ON WIRES #14, #15 & #20 | 5/22/17 | JS/ |
| B | EC 17/415 | ADDED 0459-190 TERMINAL INSULATORS TO WIRES 16 & 17 | 12/19/17 | JS/SDS |

| DIMENSIONS ARE IN INCHES, UNLESS OTHERWISE SPECIFIED | | | | DIMENSIONS DESIGNATED MM ARE IN MILLIMETERS, UNLESS OTHERWISE SPECIFIED | | | |
|--|--------------|-----------------|---------|---|----------------|---------|--|
| TOL. ON INCHES | MM | CHECKED | DATE | TOLERANCES NON-CUMULATIVE | DRAWN | DATE | |
| .XX | ± .02 | Steve Schmitzer | 3/24/17 | | JERRY STEDNICK | 3/23/17 | |
| .XXX | ± .010 | Ron Koufrman | 3/24/17 | | | | |
| ANGULAR | ± 1/2° | MFG. ENG. | | | | | |
| MATERIAL | | | | | | | |
| UNIT | KA4C1.4MML-6 | APPROVED | 3/24/17 | | | | |
| | | Joe Milko | | | | | |

| TITLE | | | |
|-------------------------------|-------|----------|--------|
| KOOLTRONIC, INC. | | | |
| ROPERWELL, NJ VENTURA, CA USA | | | |
| WIRING DIAGRAM | | | |
| MML DIXELL | | | |
| CODE IDENT. NO. | SIZE | DWG. NO. | REV |
| 06223 | C | WD-1616 | B |
| CAD. REF. | SCALE | SHEET | 1 OF 1 |
| | NONE | | |