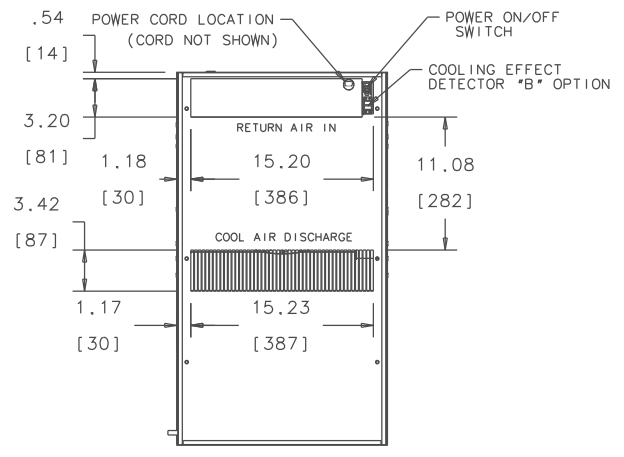
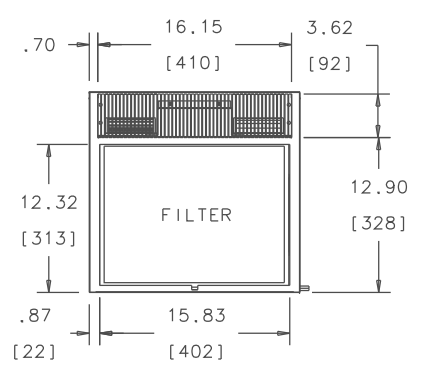
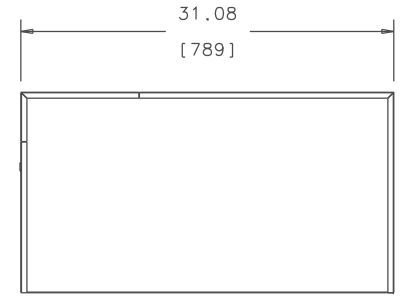
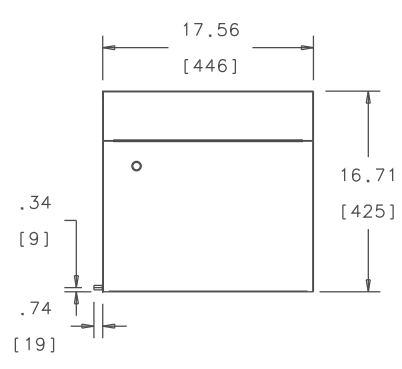
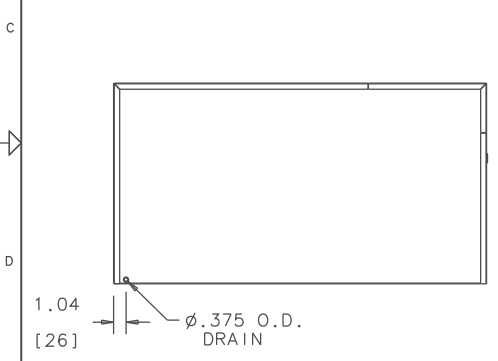
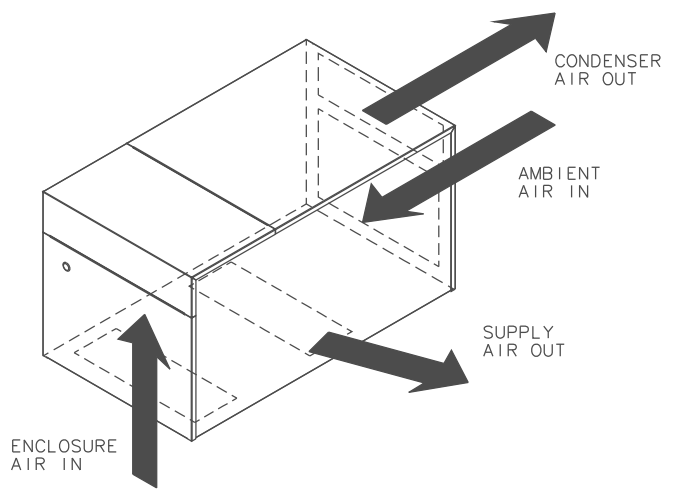
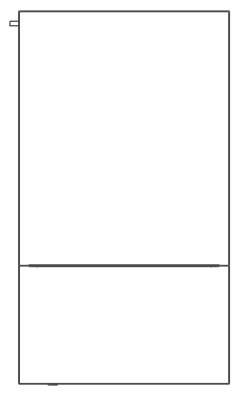
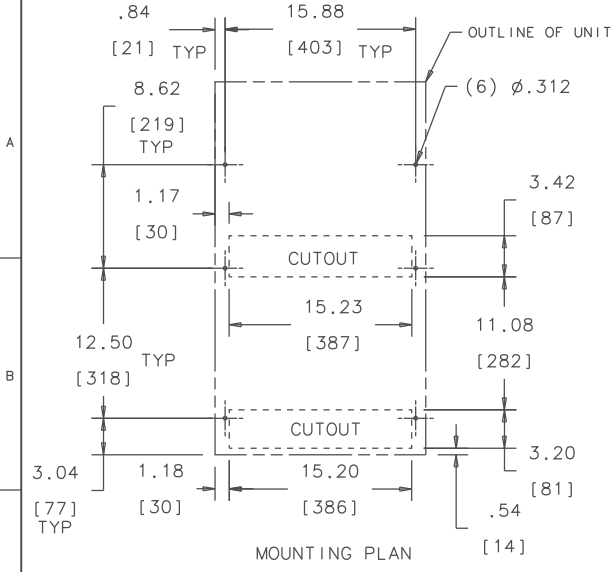


THIS DOCUMENT IS THE PROPERTY OF KOOLTRONIC, INC. AND CONTAINS PROPRIETARY AND CONFIDENTIAL INFORMATION WHICH MUST NOT BE DUPLICATED, USED OR DISCLOSED TO OTHERS, EXCEPT AS EXPRESSLY AUTHORIZED IN WRITING BY KOOLTRONIC, INC.

REVISIONS				
SYM	NOTICE	DESCRIPTION	DATE	APPROVED
-	ER 10/069	NEW DRAWING RELEASE	12/6/10	JS



ALL DIMENSIONS ARE IN INCHES. DIMENSIONS DESIGNATED MM ARE IN MILLIMETERS.			DRAWN: JERRY STEDNICK DATE: 12/6/10	
UNLESS OTHERWISE SPECIFIED TOLERANCES NON-ACCUMULATIVE			CHECKED: Steve Schmierer DATE: 12/17/10	
TOL. ON	INCHES	MM	ENG. Boris Muzikant DATE: 12/23/10	
.XX	± .02	±	MFG. ENG.	
.XXX	± .010	±		
ANGULAR	± 1/2°			
MATERIAL			CODE IDENT. NO. 06223	SIZE C
UNIT K2A6C12HTL			APPROVED Bruce Kreeley DATE: 2/23/11	DWG. NO. GA20150A
			SCALE 1/25=1	SHEET 1 of 1



GENERAL ARRANGEMENT