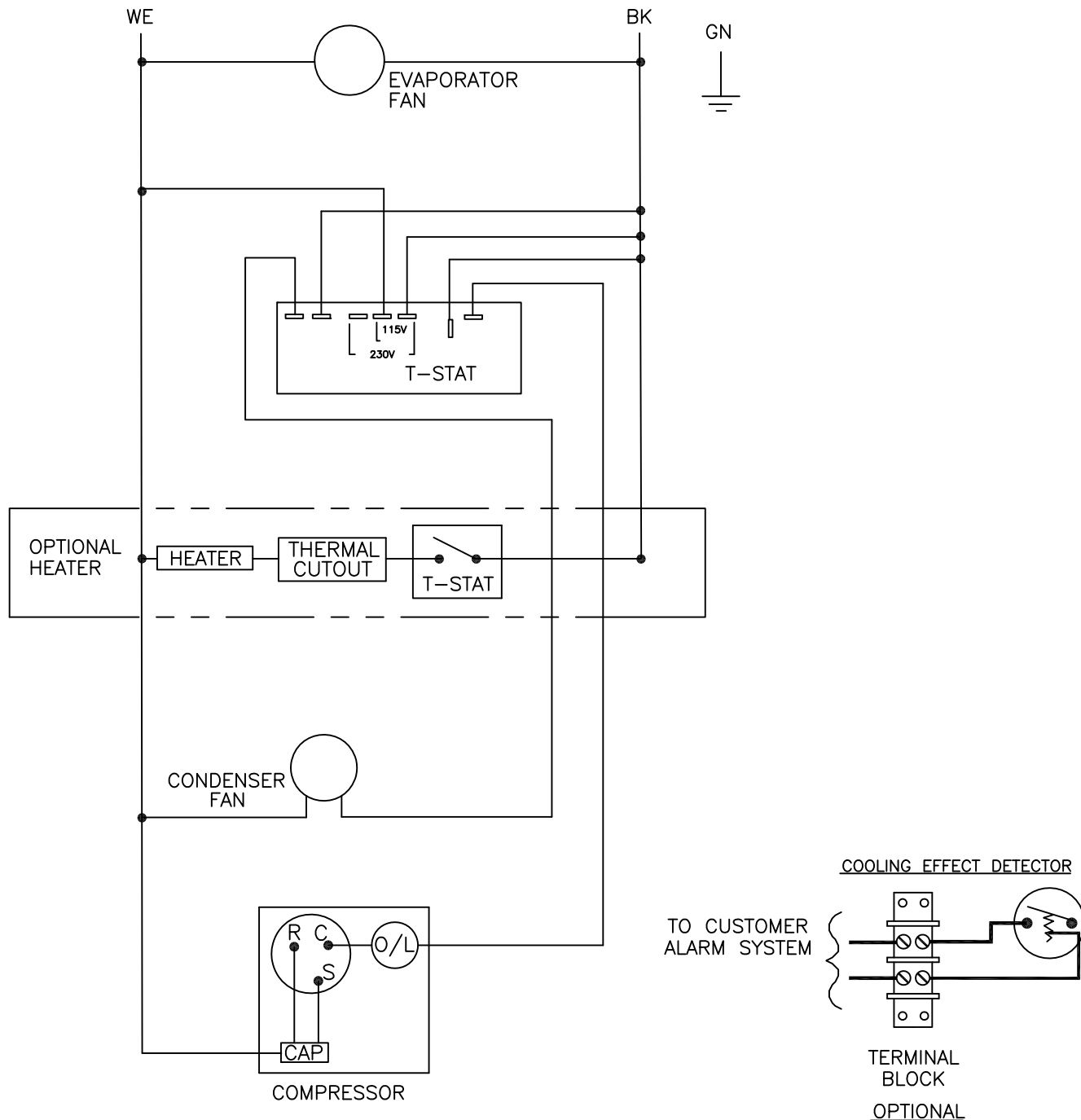


THIS DOCUMENT IS THE PROPERTY OF KOOLTRONIC, INC. AND CONTAINS PROPRIETARY AND CONFIDENTIAL INFORMATION WHICH MUST NOT BE DUPLICATED, USED OR DISCLOSED TO OTHERS, EXCEPT AS EXPRESSLY AUTHORIZED IN WRITING BY KOOLTRONIC, INC.

REVISIONS

SYM	NOTICE	DESCRIPTION	DATE	APPROVED
-	ER 06/001	NEW DRAWING RELEASE	1/4/06	JS DW-
A	EC 14/170	REMOVED SURGE SUPPRESSOR	5/28/14	LM/



ALL DIMENSIONS ARE IN INCHES,  
DIMENSIONS DESIGNATED MM ARE IN MILLIMETERS.

UNLESS OTHERWISE SPECIFIED  
TOLERANCES NON-ACCUMULATIVE

TOL. ON	INCHES	MM
.XX	± .02	±
.XXX	± .010	±
ANGULAR	± 1/2°	

DRAWN JERRY STEDNICK	DATE 1/2/06
CHECKED DAVE W	2/23/06
ENG. BORIS MUZIKANT	1/2/06
MFG. ENG.	



WIRING DIAGRAM

MATERIAL		CODE IDENT. NO. 06223	SIZE A	DWG. NO. WD-1132	REV A
UNITS KA4C2DP17L	APPROVED B KREELEY	2/28/06	SCALE N/A	CAD. REF. WD-1132	SHEET 1 OF 1