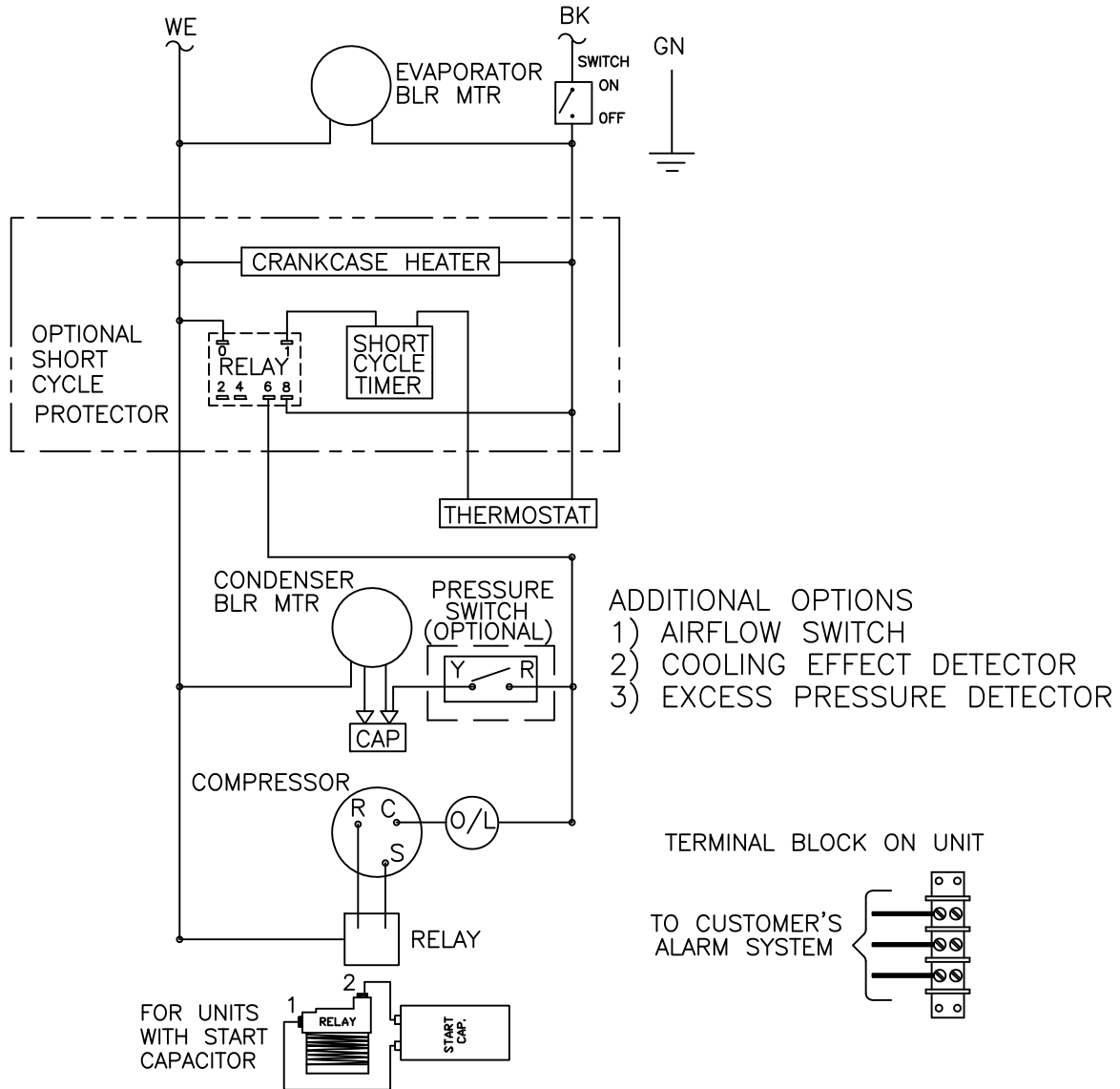


THIS DOCUMENT IS THE PROPERTY OF KOOLTRONIC, INC. AND CONTAINS PROPRIETARY AND CONFIDENTIAL INFORMATION WHICH MUST NOT BE DUPLICATED, USED OR DISCLOSED OTHER THAN AS EXPRESSLY AUTHORIZED BY KOOLTRONIC, INC.

REVISIONS				
SYM	NOTICE	DESCRIPTION	DATE	APPROVED
-	EC 01/240	NEW DRAWING RELEASE	10/2/01	RDM
A	EC 14/170	REMOVED SURGE SUPPRESSOR	5/30/14	LM/



NOTES:

- 1) ADDITIONAL OPTIONS ARE WIRED TO AN INDIVIDUAL 3 POSITION TERMINAL BLOCK SHOWN ABOVE.
- 2) 50Hz: CONTACT KOOLTRONIC

SHORT CYCLE PROTECTION & LOW AMBIENT KIT

ALL DIMENSIONS ARE IN INCHES,
DIMENSIONS DESIGNATED MM ARE IN MILLIMETERS.

UNLESS OTHERWISE SPECIFIED
TOLERANCES NON-ACCUMULATIVE

TOL. ON	INCHES	MM
.XX	± .02	±
.XXX	± .010	±
ANGULAR		± 1/2°

MATERIAL
UNITS
P28 SERIES 230V

DRAWN **R.D. MOORE** DATE 10/2/01
CHECKED
ENG.
MFG. ENG.
APPROVED



WIRING DIAGRAM

CODE IDENT. NO.	SIZE	DWG. NO.	REV
06223	A	WD-733	A
SCALE 7/8=1	CAD. REF.	WD-733	SHEET 1 OF 1